

#21330

α -catenin (Ab-641) Antibody

Catalog: #21330-1 50 μ l **Orders:** order@signalwayantibody.com
#21330-2 100 μ l **Support:** tech@signalwayantibody.com
Storage: Store at -20°C/1 year **Web:** www.signalwayantibody.com



Application	Species Reactivity	Source	Molecular Wt.
WB	Human Mouse	Rabbit Polyconal Ab	100KD

Description: Antibodies were produced by immunizing rabbits with synthetic peptide and KLH conjugates. Antibodies were purified by affinity-chromatography using epitope-specific peptide.

Specificity: The antibody detects endogenous level of total α -catenin protein.

Immunogen: Peptide sequence around aa. 639~643 (D-D-S-D-F) derived from Human α -catenin.

Formulation: Supplied at 1.0mg/mL in phosphate buffered saline (without Mg²⁺ and Ca²⁺), pH 7.4, 150mM NaCl, 0.02% sodium azide and 50% glycerol.

Synonyms: Cadherin-associated protein Alpha E-catenin
NY-REN-13 antigen

Accession No.: Swiss-Prot#: P35221 NCBI Gene#: 1495
NCBI Protein#: NP_001894.2

Background: Associates with the cytoplasmic domain of a variety of cadherins. The association of catenins to cadherins produces a complex which is linked to the actin filament network, and which seems to be of primary importance for cadherins cell-adhesion properties. May play a crucial role in cell differentiation.

References:

- Hwang, S.G. et al. (2005) J. Biol. Chem. 280, 12758-12765
Drees, F. et al. (2005) Cell 123, 903-915.
Yamada, S. et al. (2005) Cell 123, 889-901.
Kobielak, A. and Fuchs, E. (2004) Nat. Rev. Mol. Cell Biol. 5, 614-625.

Citation:

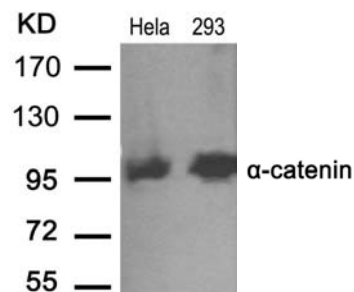
If you publish research using #21330 please [let us know](#).

Related Pathway: Wnt/beta-catenin

Note: For western blotting, incubate membrane with diluted antibody in 5% nonfat milk, 1X TBS, 0.1% Tween-20 at 4°C with gentle shaking, overnight.

Recommended Dilutions:

Western blotting 1:500~1:1000



Western blot analysis of extracts from HeLa and 293 cells using α -catenin (Ab-641) antibody #21330.