

#21325

## Smad3 (Ab-425) Antibody

**Catalog:** #21325-1      50µl      **Orders:** [order@signalwayantibody.com](mailto:order@signalwayantibody.com)  
#21325-2      100µl      **Support:** [tech@signalwayantibody.com](mailto:tech@signalwayantibody.com)  
**Storage:** Store at -20°C/1 year      **Web:** [www.signalwayantibody.com](http://www.signalwayantibody.com)



Application	Species Reactivity	Source	Molecular Wt.
IHC IF	Human Mouse Rat	Rabbit Polyclonal Ab	52KD

**Description:** Antibodies were produced by immunizing rabbits with synthetic peptide and KLH conjugates. Antibodies were purified by affinity-chromatography using epitope-specific peptide.

**Specificity:** The antibody detects endogenous level of total Smad3 protein.

**Immunogen:** Peptide sequence around aa.423~427 (C-S-S-V-S) derived from Human Smad3.

**Formulation:** Supplied at 1.0mg/mL in phosphate buffered saline (without Mg<sup>2+</sup> and Ca<sup>2+</sup>), pH 7.4, 150mM NaCl, 0.02% sodium azide and 50% glycerol.

**Synonyms:** JV15-2    MAD-3    MADH3    Mad3    Mothers against DPP homolog 3

**Accession No.:** Swiss-Prot#: P84022      NCBI Gene#: 4088  
NCBI Protein#: NP\_001138574.1

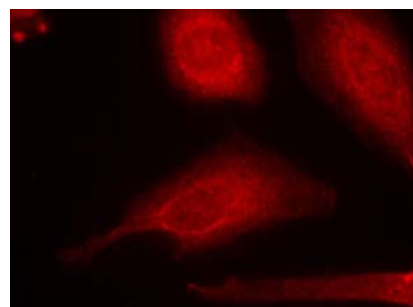
**Background:** Smad3 encoded by this gene belongs to the SMAD, a family of proteins similar to the gene products of the Drosophila gene 'mothers against decapentaplegic' (Mad) and the C. elegans gene Sma. SMAD proteins are signal transducers and transcriptional modulators that mediate multiple signaling pathways. This protein functions as a transcriptional modulator activated by transforming growth factor-beta and is thought to play a role in the regulation of carcinogenesis.

### References:

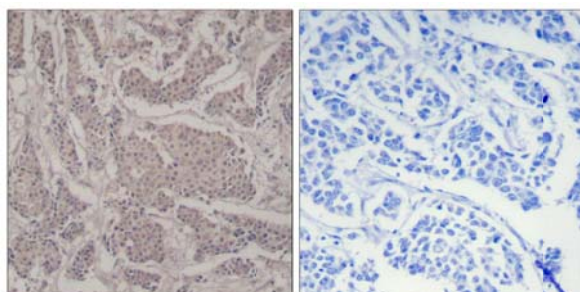
Shi W, et al. J Cell Sci. 2007 Apr 1;120(Pt 7):1216-24  
Seong HA, et al. J Biol Chem. 2007 Apr 20;282(16):12272-89  
Wordinger RJ, et al. Invest Ophthalmol Vis Sci. 2007 Mar;48(3):1191-200  
LeClair RJ, et al. Circ Res. 2007 Mar 30;100(6):826-33

### Recommended Dilutions:

Immunohistochemistry    1:50~1:100  
Immunofluorescence    1:100~1:200



Immunofluorescence staining of methanol-fixed Hela cells using Smad3 (Ab-425) Antibody #21325.



Immunohistochemical analysis of paraffin-embedded human breast carcinoma tissue using Smad3 (Ab-425) Antibody #21325 (left) or the same antibody preincubated with blocking peptide (right).

### Citation:

If you publish research using #21325 please [let us know](#).

**Related Pathway:** TGF-beta signaling

**Note:** For western blotting, incubate membrane with diluted antibody in 5% nonfat milk, 1X TBS, 0.1% Tween-20 at 4°C with gentle shaking, overnight.