

#21324

Smad3 (Ab-208) Antibody

Catalog: #21324-1 50µl **Orders:** order@signalwayantibody.com
#21324-2 100µl **Support:** tech@signalwayantibody.com
Storage: Store at -20°C/1 year **Web:** www.signalwayantibody.com



Application	Species Reactivity	Source	Molecular Wt.
IHC IF	Human Mouse Rat	Rabbit Polyconal Ab	52KD

Description: Antibodies were produced by immunizing rabbits with synthetic peptide and KLH conjugates. Antibodies were purified by affinity-chromatography using epitope-specific peptide.

Specificity: The antibody detects endogenous level of total Smad3 protein.

Immunogen: Peptide sequence around aa.206~210 (N-L-S-P-N) derived from Human Smad3.

Formulation: Supplied at 1.0mg/mL in phosphate buffered saline (without Mg²⁺ and Ca²⁺), pH 7.4, 150mM NaCl, 0.02% sodium azide and 50% glycerol.

Synonyms: JV15-2 MAD-3 MADH3 Mad3 Mothers against DPP homolog 3

Accession No.: Swiss-Prot#: P84022 NCBI Gene#: 4088
NCBI Protein#: NP_001138574.1

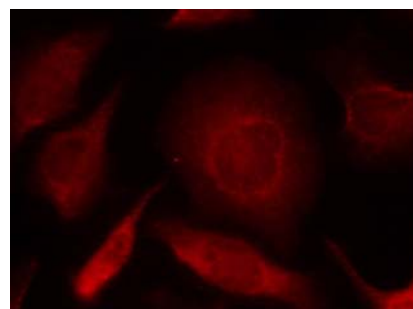
Background: Smad3 encoded by this gene belongs to the SMAD, a family of proteins similar to the gene products of the Drosophila gene 'mothers against decapentaplegic' (Mad) and the C. elegans gene Sma. SMAD proteins are signal transducers and transcriptional modulators that mediate multiple signaling pathways. This protein functions as a transcriptional modulator activated by transforming growth factor-beta and is thought to play a role in the regulation of carcinogenesis.

References:

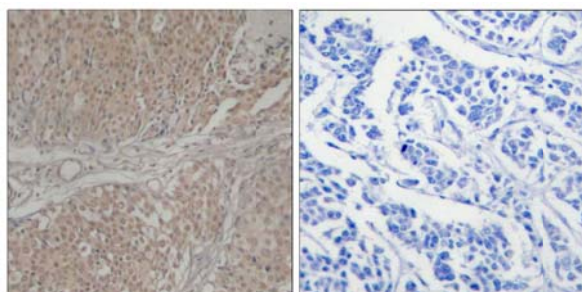
Shi W, et al. J Cell Sci. 2007 Apr 1;120(Pt 7):1216-24
Seong HA, et al. J Biol Chem. 2007 Apr 20;282(16):12272-89
Wordinger RJ, et al. Invest Ophthalmol Vis Sci. 2007 Mar;48(3):1191-200
LeClair RJ, et al. Circ Res. 2007 Mar 30;100(6):826-33

Recommended Dilutions:

Immunohistochemistry 1:50~1:100
Immunofluorescence 1:100~1:200



Immunofluorescence staining of methanol-fixed Hela cells using Smad3 (Ab-208) Antibody #21324.



Immunohistochemical analysis of paraffin-embedded human breast carcinoma tissue using Smad3 (Ab-208) Antibody #21324 (left) or the same antibody preincubated with blocking peptide (right).

Citation:

If you publish research using #21324 please [let us know](#).

Related Pathway: TGF-beta signaling

Note: For western blotting, incubate membrane with diluted antibody in 5% nonfat milk, 1X TBS, 0.1% Tween-20 at 4°C with gentle shaking, overnight.