

#21323

## Smad2 (Ab-220) Antibody

**Catalog:** #21323-1 50µl **Orders:** [order@signalwayantibody.com](mailto:order@signalwayantibody.com)  
#21323-2 100µl **Support:** [tech@signalwayantibody.com](mailto:tech@signalwayantibody.com)  
**Storage:** Store at -20°C/1 year **Web:** [www.signalwayantibody.com](http://www.signalwayantibody.com)



Application	Species Reactivity	Source	Molecular Wt.
WB IHC	Human Mouse Rat	Rabbit Polyconal Ab	60KD

**Description:** Antibodies were produced by immunizing rabbits with synthetic peptide and KLH conjugates. Antibodies were purified by affinity-chromatography using epitope-specific peptide.

**Specificity:** The antibody detects endogenous level of total Smad2 protein.

**Immunogen:** Peptide sequence around aa.218~222 (P-E-T-P-P) derived from Human Smad2.

**Formulation:** Supplied at 1.0mg/mL in phosphate buffered saline (without Mg<sup>2+</sup> and Ca<sup>2+</sup>), pH 7.4, 150mM NaCl, 0.02% sodium azide and 50% glycerol.

**Synonyms:** JV18-1 MADH2 MADR2 Mad-related protein 2 Mothers against DPP homolog 2

**Accession No.:** Swiss-Prot#: Q15796 NCBI Gene#: 4087  
NCBI Protein#: NP\_001003652.1

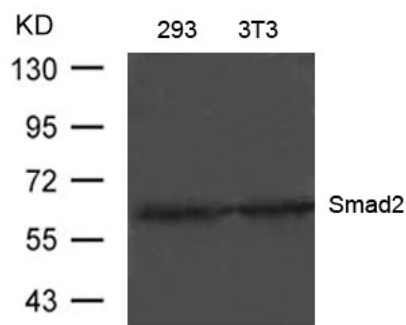
**Background:** Transcriptional modulator activated by TGF-beta and activin type 1 receptor kinase. SMAD2 is a receptor-regulated SMAD (R-SMAD). May act as a tumor suppressor in colorectal carcinoma.

### References:

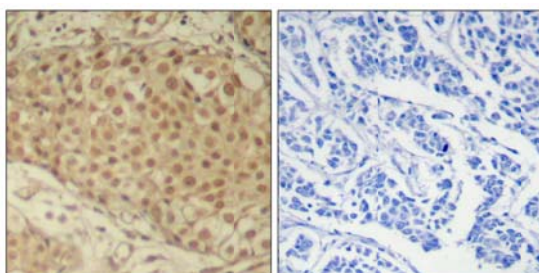
Sang Gyun Kim et al. (2004) Mol Biol Cell. February; 15(2): 420–434.  
Rebecca A. Randall et al. (2004) Mol Cell Biol. February; 24(3): 1106–1121.  
Kimberly A Brown et al. (2004) Breast Cancer Res.; 6(3): R215–R231.

### Recommended Dilutions:

Western blotting 1:500~1:1000  
Immunohistochemistry 1:50~1:100



Western blot analysis of extracts from 293 and 3T3 cells using Smad2 (Ab-220) Antibody #21323



Immunohistochemical analysis of paraffin-embedded human breast carcinoma tissue using Smad2 (Ab-220) Antibody #21323 (left) or the same antibody preincubated with blocking peptide (right).

### Citation:

If you publish research using #21323 please [let us know](#).

**Related Pathway:** TGF-beta signaling

**Note:** For western blotting, incubate membrane with diluted antibody in 5% nonfat milk, 1X TBS, 0.1% Tween-20 at 4°C with gentle shaking, overnight.