

#21322

Smad2 (Ab-467) Antibody

Catalog: #21322-1 50µl **Orders:** order@signalwayantibody.com
#21322-2 100µl **Support:** tech@signalwayantibody.com
Storage: Store at -20°C/1 year **Web:** www.signalwayantibody.com



Application	Species Reactivity	Source	Molecular Wt.
WB IF	Human Mouse Rat	Rabbit Polyclonal Ab	60KD

Description: Antibodies were produced by immunizing rabbits with synthetic peptide and KLH conjugates. Antibodies were purified by affinity-chromatography using epitope-specific peptide.

Specificity: The antibody detects endogenous level of total Smad2 protein.

Immunogen: Peptide sequence around aa. 463~467 (C-S-S-M-S) derived from Human Smad2.

Formulation: Supplied at 1.0mg/mL in phosphate buffered saline (without Mg²⁺ and Ca²⁺), pH 7.4, 150mM NaCl, 0.02% sodium azide and 50% glycerol.

Synonyms: Mad-related protein 2

Accession No.: Swiss-Prot#: Q15796 NCBI Gene#: 4087
NCBI Protein#: NP_001003652.1

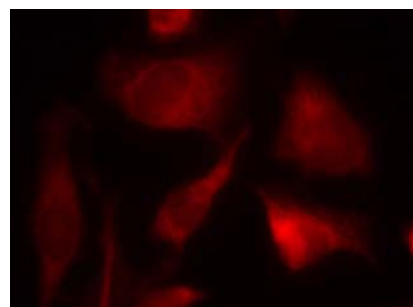
Background: Transcriptional modulator activated by TGF-beta and activin type 1 receptor kinase. SMAD2 is a receptor-regulated SMAD (R-SMAD). May act as a tumor suppressor in colorectal carcinoma.

References:

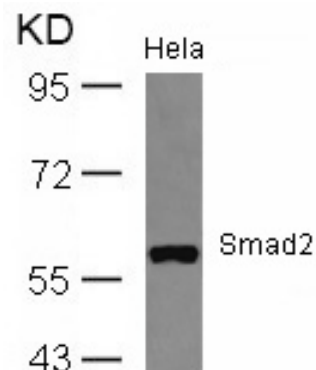
Sang Gyun Kim et al. (2004) Mol Biol Cell. February; 15(2): 420-434.
Rebecca A. Randall et al. (2004) Mol Cell Biol. February; 24(3): 1106-1121.
Kimberly A Brown et al. (2004) Breast Cancer Res.; 6(3): R215-R231.

Recommended Dilutions:

Western blotting 1:500~1:1000
Immunofluorescence 1:100~1:200



Immunofluorescence staining of methanol-fixed HeLa cells using Smad2 (Ab-467) Antibody #21322.



Western blot analysis of extracts from HeLa cells using Smad2 (Ab-467) Antibody #21322.

Citation:

If you publish research using #21322 please [let us know](#).

Related Pathway: TGF-beta signaling

Note: For western blotting, incubate membrane with diluted antibody in 5% nonfat milk, 1X TBS, 0.1% Tween-20 at 4°C with gentle shaking, overnight.