

#21313

Opioid Receptor (Ab-375) Antibody

Catalog: #21313-1 50µl **Orders:** order@signalwayantibody.com
#21313-2 100µl **Support:** tech@signalwayantibody.com
Storage: Store at -20°C/1 year **Web:** www.signalwayantibody.com



Application	Species Reactivity	Source	Molecular Wt.
WB	Human Mouse Rat	Rabbit Polyconal Ab	80KD

Description: Antibodies were produced by immunizing rabbits with synthetic peptide and KLH conjugates. Antibodies were purified by affinity-chromatography using epitope-specific peptide.

Specificity: The antibody detects endogenous level of total Opioid Receptor protein.

Immunogen: Peptide sequence around aa.373~377 (H-P-S-T-A) derived from Human Opioid Receptor.

Formulation: Supplied at 1.0mg/mL in phosphate buffered saline (without Mg²⁺ and Ca²⁺), pH 7.4, 150mM NaCl, 0.02% sodium azide and 50% glycerol.

Synonyms: MOR MUOR1 Mu-type opioid receptor OPRM OPRM1

Accession No.: Swiss-Prot#: P35372 NCBI Gene#: 4988
NCBI Protein#: NP_000905.3

Background: Inhibits neurotransmitter release by reducing calcium ion currents and increasing potassium ion conductance. Receptor for beta-endorphin.

References:

Rodríguez-Muñoz M, et al. (2007) RGS14 prevents morphine from internalizing Mu-opioid receptors in periaqueductal gray neurons. *Cell Signal* 19, 2558-71

Citation:

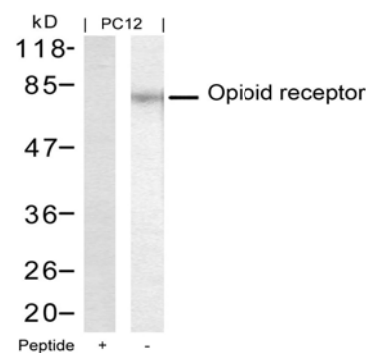
If you publish research using #21313 please [let us know](#).

Related Pathway: Receptors, Neuroscience

Note: For western blotting, incubate membrane with diluted antibody in 5% nonfat milk, 1X TBS, 0.1% Tween-20 at 4°C with gentle shaking, overnight.

Recommended Dilutions:

Western blotting 1:500~1:1000



Western blot analysis of extracts from PC12 cells using Opioid Receptor (Ab-375) Antibody #21313 and the same antibody preincubated with blocking peptide.