

#21312

## NFκB-p105/p50 (Ab-927) Antibody



**Catalog:** #21312-1 50μl **Orders:** [order@signalwayantibody.com](mailto:order@signalwayantibody.com)  
#21312-2 100μl **Support:** [tech@signalwayantibody.com](mailto:tech@signalwayantibody.com)  
**Storage:** Store at -20°C/1 year **Web:** [www.signalwayantibody.com](http://www.signalwayantibody.com)

Application	Species Reactivity	Source	Molecular Wt.
WB IF	Human Mouse Rat	Rabbit Polyclonal Ab	50 120KD

**Description:** Antibodies were produced by immunizing rabbits with synthetic peptide and KLH conjugates. Antibodies were purified by affinity-chromatography using epitope-specific peptide.

**Specificity:** The antibody detects endogenous level of total NFκB-p105/p50 protein.

**Immunogen:** Peptide sequence around aa.925~929 (C-D-S-G-V ) derived from Human NFκB-p105.

**Formulation:** Supplied at 1.0mg/mL in phosphate buffered saline (without Mg<sup>2+</sup> and Ca<sup>2+</sup>), pH 7.4, 150mM NaCl, 0.02% sodium azide and 50% glycerol.

**Synonyms:** DNA-binding factor KBF1 EBP-1 NF-kappa-B1  
p84/NF-kappa-B1 p98 NFKB1 NFκB-p50

**Accession No.:** Swiss-Prot#: P19838 NCBI Gene#: 4790  
NCBI Protein#: NP\_001158884.1

**Background:** NF-kappa-B is a pleiotropic transcription factor which is present in almost all cell types and is involved in many biological processes such as inflammation, immunity, differentiation, cell growth, tumorigenesis and apoptosis. NF-kappa-B is a homo- or heterodimeric complex formed by the Rel-like domain-containing proteins RELA/p65, RELB, NFKB1/p105, NFKB1/p50, REL and NFKB2/p52. The dimers bind at kappa-B sites in the DNA of their target genes and the individual dimers have distinct preferences for different kappa-B sites that they can bind with distinguishable affinity and specificity. Different dimer combinations act as transcriptional activators or repressors, respectively.

### References:

Hou S, et al. (2003) J Biol Chem. 278(46): 45994-45998.  
Baeuerle P A, et al. (1994) Annu Rev Immunol. 12:141-179.  
Baeuerle P A, et al. (1996) Cell 87:13-20.  
Haskill S, et al. (1991) Cell 65:1281-1289.

### Citation:

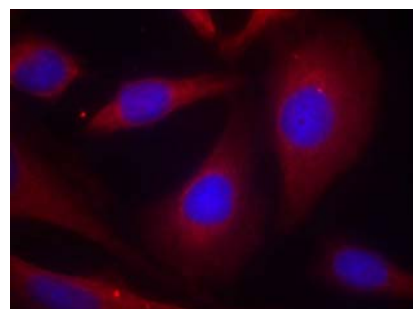
If you publish research using #21312 please [let us know](#).

**Related Pathway:** NF-kappa B, Cancer/Apoptosis

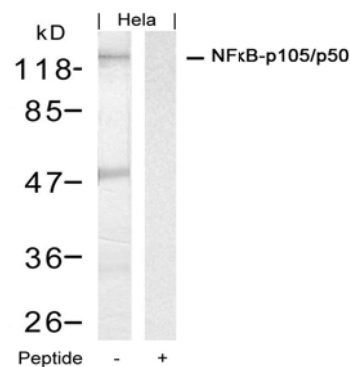
**Note:** For western blotting, incubate membrane with diluted antibody in 5% nonfat milk, 1X TBS, 0.1% Tween-20 at 4°C with gentle shaking, overnight.

### Recommended Dilutions:

Western blotting 1:500~1:1000  
Immunofluorescence 1:100~1:200



Immunofluorescence staining of methanol-fixed HeLa cells using NFκB-p105/p50 (Ab-927) Antibody #21312.



Western blot analysis of extracts from HeLa cells using NFκB-p105/p50 (Ab-927) Antibody #21312 and the same antibody preincubated with blocking peptide.