

#21305

IKK- β (Ab-199) Antibody

Catalog: #21305-1 50 μ l **Orders:** order@signalwayantibody.com
#21305-2 100 μ l **Support:** tech@signalwayantibody.com
Storage: Store at -20°C/1 year **Web:** www.signalwayantibody.com



Application	Species Reactivity	Source	Molecular Wt.
WB IF	Human Mouse Rat	Rabbit Polyclonal Ab	87KD

Description: Antibodies were produced by immunizing rabbits with synthetic peptide and KLH conjugates. Antibodies were purified by affinity-chromatography using epitope-specific peptide.

Specificity: The antibody detects endogenous level of total IKK- β protein.

Immunogen: Peptide sequence around aa.197~201 (Q-K-Y-T-V) derived from Human IKK- β .

Formulation: Supplied at 1.0mg/mL in phosphate buffered saline (without Mg²⁺ and Ca²⁺), pH 7.4, 150mM NaCl, 0.02% sodium azide and 50% glycerol.

Synonyms: I-kappa-B kinase 2 I-kappa-B-kinase beta IKK2 IkBKB NFKB1KB

Accession No.: Swiss-Prot#: O14920 NCBI Gene#: 3551
NCBI Protein#: NP_001547.1

Background: Acts as part of the IKK complex in the conventional pathway of NF-kappa-B activation and phosphorylates inhibitors of NF-kappa-B thus leading to the dissociation of the inhibitor/NF-kappa-B complex and ultimately the degradation of the inhibitor. Also phosphorylates NCOA3.

References:

Chen RA, et al. PLoS Pathog. 2008 Feb 8;4(2):e22
Yen CJ, et al. Cancer Res. 2008 Apr 15;68(8):2632-40

Citation:

If you publish research using #21305 please [let us know](#).

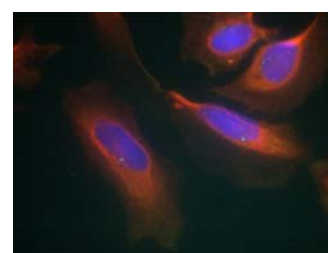
Related Pathway: NF-kappa B, Kinase/Phosphatases

Note: For western blotting, incubate membrane with diluted antibody in 5% nonfat milk, 1X TBS, 0.1% Tween-20 at 4°C with gentle shaking, overnight.

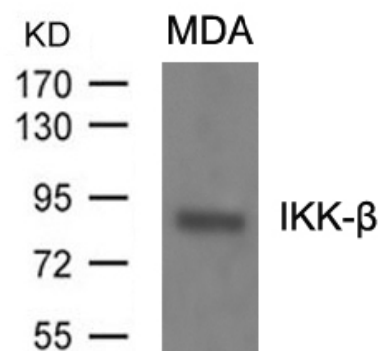
Recommended Dilutions:

Western blotting 1:500~1:1000

Immunofluorescence 1:100~1:200



Immunofluorescence staining of methanol-fixed HeLa cells using IKK- β (Ab-199) Antibody #21305.



Western blot analysis of extracts from MDA cells using IKK- β (Ab-199) Antibody #21305.