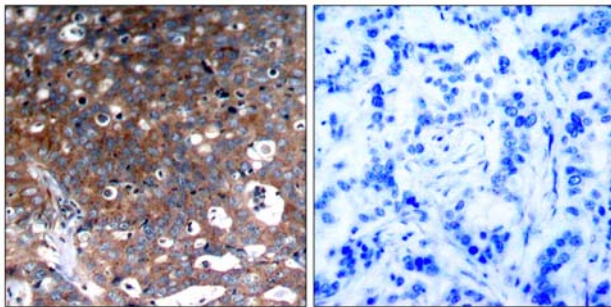
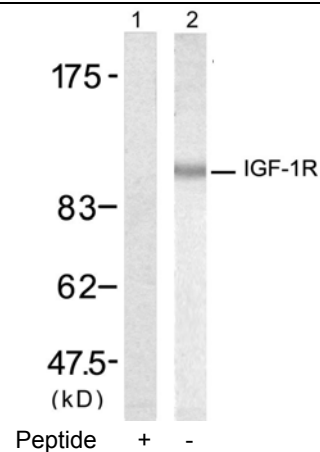


- Catalog Number:** 21303 -1, 21303 -2
- Amount:** 50µg/50µl, 100µg/100µl
- Swiss-Prot No. :** P08069
- Form of Antibody:** Rabbit IgG in phosphate buffered saline (without Mg²⁺ and Ca²⁺), pH 7.4, 150mM NaCl, 0.02% sodium azide and 50% glycerol.
- Storage/Stability:** Store at -20°C/1 year
- Immunogen:** The antiserum was produced against synthesized non-phosphopeptide derived from human IGF-1R around the phosphorylation site of tyrosine 1346 (Q-P-Y^P-A-H).
- Purification:** The antibody was affinity-purified from rabbit antiserum by affinity-chromatography using epitope-specific immunogen.
- Specificity/Sensitivity:** IGF-1R (Ab-1346) antibody detects endogenous levels of total IGF-1R protein.
- Reactivity:** Human, Mouse, Rat
- Applications:** WB: 1:500~1:1000 IHC: 1:50-1:100
- References:** Adams, T.E. et al. (2000) Cell. Mol. Life Sci. 57, 1050-1093
 Baserga, R. et al. (2000) Oncogene 19, 5574-5581
 Scheidegger, K.J. et al. (2000) J. Biol. Chem. 275, 38921-38928.
 O'Connor R, et al. Mol Cell Biol 1997 Jan; 17(1): 427-35



Peptide - +
 Immunohistochemical analysis of paraffin-embedded human breast carcinoma tissue, using IGF-1R (Ab-1346) antibody (#21303).



Western blot analysis of extract from 293 cells, using IGF-1R (Ab-1346) antibody (#21303, Lane 1 and 2).