

#21300

## CREB (Ab-142) Antibody

**Catalog:** #21300-1      50µl      **Orders:** [order@signalwayantibody.com](mailto:order@signalwayantibody.com)  
#21300-2      100µl      **Support:** [tech@signalwayantibody.com](mailto:tech@signalwayantibody.com)  
**Storage:** Store at -20°C/1 year      **Web:** [www.signalwayantibody.com](http://www.signalwayantibody.com)



Application	Species Reactivity	Source	Molecular Wt.
IHC	Human Mouse Rat	Rabbit Polyconal Ab	43KD

**Description:** Antibodies were produced by immunizing rabbits with synthetic peptide and KLH conjugates. Antibodies were purified by affinity-chromatography using epitope-specific peptide.

### Recommended Dilutions:

Immunohistochemistry 1:50~1:100

**Specificity:** The antibody detects endogenous level of total CREB protein.

**Immunogen:** Peptide sequence around aa.140~144 (D-L-S-S-D) derived from Human CREB.

**Formulation:** Supplied at 1.0mg/mL in phosphate buffered saline (without Mg<sup>2+</sup> and Ca<sup>2+</sup>), pH 7.4, 150mM NaCl, 0.02% sodium azide and 50% glycerol.

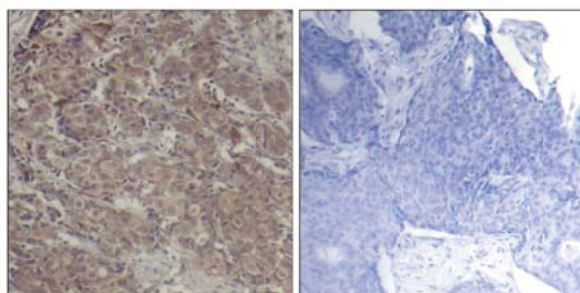
**Synonyms:** CREB-1    CREB1

**Accession No.:** Swiss-Prot#: P16220      NCBI Gene#: 1385  
NCBI Protein#: NP\_004370.1

**Background:** This protein binds the cAMP response element (CRE), a sequence present in many viral and cellular promoters. CREB stimulates transcription on binding to the CRE. Transcription activation is enhanced by the TORC coactivators which act independently of Ser-133 phosphorylation. Implicated in synchronization of circadian rhythmicity.

### References:

- Chrystelle V. Garat, et al. (2006) Mol. Cell. Biol ; 26: 4934 - 4948.  
Lilah Rothem, et al. (2004) Mol. Pharmacol ; 66: 1536 - 1543.  
Darren R. Tyson, et al. (2002) Endocrinology; 143: 674.  
Kyung-Woo Park, et al. (2003) Arterioscler. Thromb. Vasc. Biol ; 23: 1364.



Immunohistochemical analysis of paraffin-embedded human breast carcinoma tissue using CREB (Ab-142) Antibody #21300 (left) or the same antibody preincubated with blocking peptide (right).

### Citation:

If you publish research using #21300 please [let us know](#).

**Related Pathway:** MAPK, Neuroscience

**Note:** For western blotting, incubate membrane with diluted antibody in 5% nonfat milk, 1X TBS, 0.1% Tween-20 at 4°C with gentle shaking, overnight.