

#21293

## Synaptotagmin 1/2 (Ab-202/199) Antibody



Catalog: #21293-1 50µl Orders: [order@signalwayantibody.com](mailto:order@signalwayantibody.com)

#21293-2 100µl Support: [tech@signalwayantibody.com](mailto:tech@signalwayantibody.com)

Storage: Store at -20°C/1 year Web: [www.signalwayantibody.com](http://www.signalwayantibody.com)

Application	Species Reactivity	Source	Molecular Wt.
WB IF	Human Mouse Rat	Rabbit Polyclonal Ab	46KD

**Description:** Antibodies were produced by immunizing rabbits with synthetic peptide and KLH conjugates. Antibodies were purified by affinity-chromatography using epitope-specific peptide.

**Specificity:** The antibody detects endogenous level of total Synaptotagmin 1/2 protein.

**Immunogen:** Peptide sequence around aa.200~204/197~201 (R-K-T-L-N) derived from Human.

**Formulation:** Supplied at 1.0mg/mL in phosphate buffered saline (without Mg<sup>2+</sup> and Ca<sup>2+</sup>), pH 7.4, 150mM NaCl, 0.02% sodium azide and 50% glycerol.

**Synonyms:** SYT1/SYT2

**Accession No.:** Swiss-Prot#: Q8N9I0 NCBI Gene#: 6857 127833  
NCBI Protein#: NP\_001129277.1 NP\_001129976.1

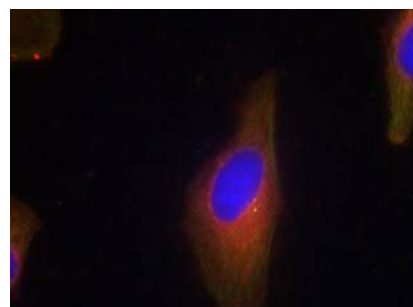
**Background:** The synaptotagmins are integral membrane proteins of synaptic vesicles thought to serve as Ca<sup>2+</sup> sensors in the process of vesicular trafficking and exocytosis. Calcium binding to synaptotagmin I participates in triggering neurotransmitter release at the synapse

### References:

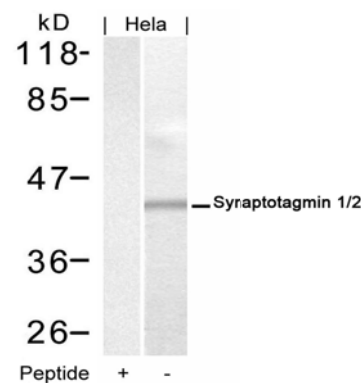
Gustavsson N, et al. Proc Natl Acad Sci U S A. 2008 Mar 11; 105(10):3992-7.  
Cnops L, et al. Cereb Cortex. 2008 May; 18(5):1221-31.  
Lynch KL, et al. Mol Biol Cell. 2007 Dec; 18(12):4957-68.

### Recommended Dilutions:

Western blotting 1:500~1:1000  
Immunofluorescence 1:100~1:200



Immunofluorescence staining of methanol-fixed HeLa cells using Synaptotagmin 1/2 (Ab-202/199) Antibody #21293.



Western blot analysis of extracts from HeLa cells using Synaptotagmin 1/2 (Ab-202/199) Antibody #21293 and the same antibody preincubated with blocking peptide.

### Citation:

If you publish research using #21293 please [let us know](#).

**Related Pathway:** Cytoskeletal/Adhesion, Neuroscience

**Note:** For western blotting, incubate membrane with diluted antibody in 5% nonfat milk, 1X TBS, 0.1% Tween-20 at 4°C with gentle shaking, overnight.