

#21281

CPI17 α (Ab-38) Antibody

Catalog: #21281-1 50 μ l **Orders:** order@signalwayantibody.com
#21281-2 100 μ l **Support:** tech@signalwayantibody.com
Storage: Store at -20°C/1 year **Web:** www.signalwayantibody.com



| Application | Species Reactivity | Source | Molecular Wt. |
|-------------|--------------------|---------------------|---------------|
| IF | Human Mouse Rat | Rabbit Polyconal Ab | 17KD |

Description: Antibodies were produced by immunizing rabbits with synthetic peptide and KLH conjugates. Antibodies were purified by affinity-chromatography using epitope-specific peptide.

Specificity: The antibody detects endogenous level of total CPI17 α protein.

Immunogen: Peptide sequence around aa.36~40 (R-V-T-V-K) derived from Human CPI17 α .

Formulation: Supplied at 1.0mg/mL in phosphate buffered saline (without Mg²⁺ and Ca²⁺), pH 7.4, 150mM NaCl, 0.02% sodium azide and 50% glycerol.

Synonyms: CPI CPI-17 CPI17 PP14A

Accession No.: Swiss-Prot#: Q96A00 NCBI Gene#: 94274
NCBI Protein#: NP_150281.1

Background: Inhibitor of PPP1CA. Has over 1000-fold higher inhibitory activity when phosphorylated, creating a molecular switch for regulating the phosphorylation status of PPP1CA substrates and smooth muscle contraction.

References:

Hagerty L, et al. (2007) J Biol Chem. 2007; 282(7):4884-93
Seok YM, et al. (2008) J Pharmacol Exp Ther.
Niiron N et al. (2003) Biochem J. 2003 ;369(Pt 1):117-28

Citation:

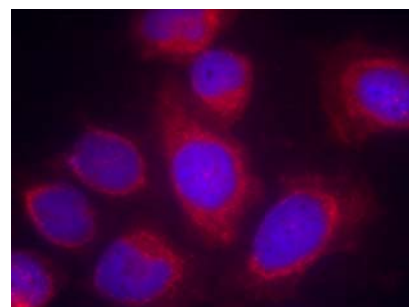
If you publish research using #21281 please [let us know](#).

Related Pathway: AKT

Note: For western blotting, incubate membrane with diluted antibody in 5% nonfat milk, 1X TBS, 0.1% Tween-20 at 4°C with gentle shaking, overnight.

Recommended Dilutions:

Immunofluorescence 1:100~1:200



Immunofluorescence staining of methanol-fixed HeLa cells using CPI17 α (Ab-38) Antibody #21281.