

#21278

## $\alpha$ -Synuclein (Ab-136) Antibody

**Catalog:** #21278-1      50 $\mu$ l      **Orders:** [order@signalwayantibody.com](mailto:order@signalwayantibody.com)  
#21278-2      100 $\mu$ l      **Support:** [tech@signalwayantibody.com](mailto:tech@signalwayantibody.com)  
**Storage:** Store at -20°C/1 year      **Web:** [www.signalwayantibody.com](http://www.signalwayantibody.com)



Application	Species Reactivity	Source	Molecular Wt.
WB IF	Mouse Rat	Rabbit Polyclonal Ab	18KD

**Description:** Antibodies were produced by immunizing rabbits with synthetic peptide and KLH conjugates. Antibodies were purified by affinity-chromatography using epitope-specific peptide.

**Specificity:** The antibody detects endogenous level of total  $\alpha$ -Synuclein protein.

**Immunogen:** Peptide sequence around aa. 134~138 (Q-D-Y-E-P) derived from Mouse  $\alpha$ -Synuclein.

**Formulation:** Supplied at 1.0mg/mL in phosphate buffered saline (without Mg<sup>2+</sup> and Ca<sup>2+</sup>), pH 7.4, 150mM NaCl, 0.02% sodium azide and 50% glycerol.

**Synonyms:** NACP SYN SYUA alpha-synuclein

**Accession No.:** Swiss-Prot#: P37840      NCBI Gene#: 20617  
NCBI Protein#: NP\_001035916.1

**Background:** May be involved in the regulation of dopamine release and transport. Soluble protein, normally localized primarily at the presynaptic region of axons, which can form filamentous aggregates that are the major non amyloid component of intracellular inclusions in several neurodegenerative diseases (synucleinopathies). Induces fibrillization of microtubule-associated protein tau. Reduces neuronal responsiveness to various apoptotic stimuli, leading to a decreased caspase-3 activation.

### References:

Takahashi T, et al. J Biol Chem 2003 Oct 24; 278(43): 42225-33  
Ahn BH, et al. J Biol Chem 2002 Apr 05; 277(14): 12334-42  
Negro A, et al. FASEB J 2002 Feb; 16(2): 210-2  
Goldberg, et al. Nat. Cell Biol. 2000; 2, 115-119.

### Citation:

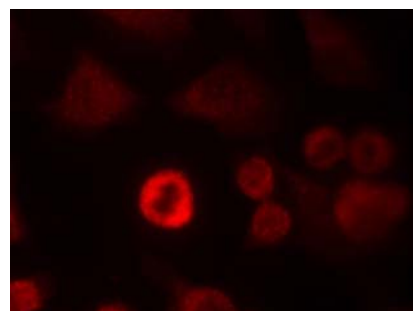
Shan-chuan Zhong, Xue Luo, Xing-shu Chen, et al. Expression and Subcellular Location of Alpha-Synuclein During Mouse-Embryonic Development. Cell Mol Neurobiol, DOI 10.1007/s10571-009-9473-4, (2009)  
If you publish research using #21278 please [let us know](#).

**Related Pathway:** Neuroscience

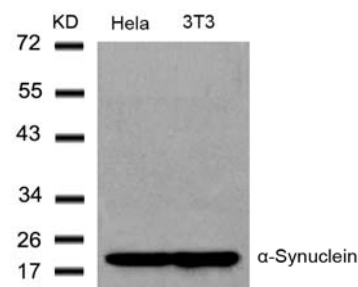
**Note:** For western blotting, incubate membrane with diluted antibody in 5% nonfat milk, 1X TBS, 0.1% Tween-20 at 4°C with gentle shaking, overnight.

### Recommended Dilutions:

Western blotting      1:500~1:1000  
Immunofluorescence      1:100~1:200



Immunofluorescence staining of methanol-fixed HeLa cells using  $\alpha$ -Synuclein (Ab-136) Antibody #21278.



Western blot analysis of extracts from HeLa and 3T3 cells using  $\alpha$ -Synuclein (Ab-136) Antibody #21278.