

#21274

Integrin β 3 (Ab-785) Antibody

Catalog: #21274-1 50 μ l **Orders:** order@signalwayantibody.com
#21274-2 100 μ l **Support:** tech@signalwayantibody.com
Storage: Store at -20°C/1 year **Web:** www.signalwayantibody.com



Application	Species Reactivity	Source	Molecular Wt.
WB	Human Mouse Rat	Rabbit Polyclonal Ab	110KD

Description: Antibodies were produced by immunizing rabbits with synthetic peptide and KLH conjugates. Antibodies were purified by affinity-chromatography using epitope-specific peptide.

Specificity: The antibody detects endogenous level of total Integrin β 3 protein.

Immunogen: Peptide sequence around aa.783~787 (I-T-Y-R-G) derived from Human Integrin B3/ITGB3.

Formulation: Supplied at 1.0mg/mL in phosphate buffered saline (without Mg²⁺ and Ca²⁺), pH 7.4, 150mM NaCl, 0.02% sodium azide and 50% glycerol.

Synonyms: CD61 antigen GP3A GPIIIa ITB3 Platelet membrane glycoprotein IIIa

Accession No.: Swiss-Prot#: P05106 NCBI Gene#: 3690
NCBI Protein#: NP_000203.2

Background: The Itg-Beta3 gene encodes the beta subunit of the platelet membrane adhesive protein receptor complex Itg-Beta3 protein, which belongs to the Integrin class of cell adhesion molecule receptors that share a common heterotrimeric structure with Alpha and Beta subunits. It is a common Beta subunit of the platelet complex and of two other Integrins (Fibronectin and Vitronectin Receptors), which have distinct Alpha subunits. Itg-Beta3 has been implicated in a wide variety of functions, including platelet aggregation and thrombosis and implantation, placentation, angiogenesis, bone remodeling, and tumor progression. Glanzmann Thrombasthenia can result from defects in the genes for either the Itg-Alpha2B or the Itg-Beta3 subunit

References:

Sujoy Bhattacharya, et al. (2006) Biochem J. August 1; 397(Pt 3): 437-447
Courter DL, et al. (2005) J Biol Chem Apr 01; 280(13): 12145-12151
Chandhoke SK, et al. (2004) J Cell Sci Mar 15; 117(Pt 8): 1431-1441

Citation:

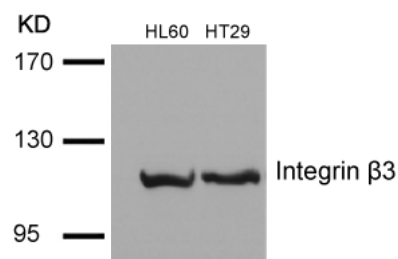
If you publish research using #21274 please [let us know](#).

Related Pathway: Cytoskeletal/Adhesion

Note: For western blotting, incubate membrane with diluted antibody in 5% nonfat milk, 1X TBS, 0.1% Tween-20 at 4°C with gentle shaking, overnight.

Recommended Dilutions:

Western blotting 1:500~1:1000



Western blot analysis of extracts from HL60 and HT29 cells using Integrin β 3 (Ab-785) Antibody #21274.