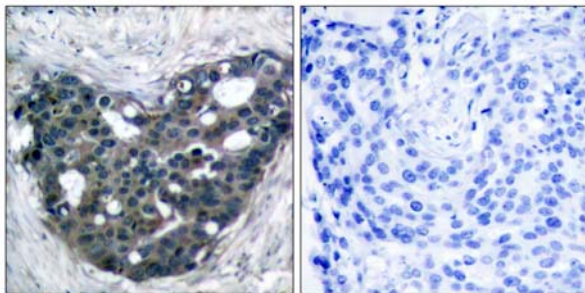
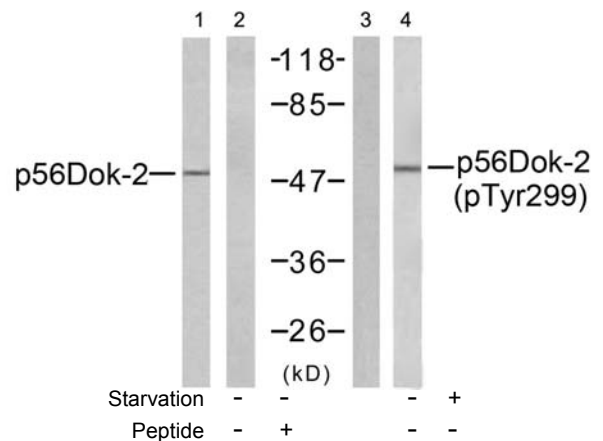


- Catalog Number:** 21270-1, 21270-2  
**Amount:** 50µg/50µl, 100µg/100µl  
**Swiss-Prot No. :** O60496  
**Form of Antibody:** Rabbit IgG in phosphate buffered saline (without Mg<sup>2+</sup> and Ca<sup>2+</sup>), pH 7.4, 150mM NaCl, 0.02% sodium azide and 50% glycerol.  
**Storage/Stability:** Store at -20°C/1 year  
**Immunogen:** The antiserum was produced against synthesized non-phosphopeptide derived from human p56Dok-2 around the phosphorylation site of tyrosine 299 (G-E-Y<sup>P</sup>-A-V).  
**Purification:** The antibody was affinity-purified from rabbit antiserum by affinity-chromatography using epitope-specific immunogen.  
**Specificity/Sensitivity:** p56Dok-2 (Ab-299) antibody detects endogenous levels of total p56Dok-2 protein.  
**Reactivity:** Human  
**Applications:** WB: 1:500~1:1000      IHC: 1:50~1:100      IF:1:100~1:200  
**References:** Feng Cong, et.al. (1999) Mol. Cell. Biol; 19: 8314 - 8325.  
 Serge Lemay, et.al. (2000) Mol. Cell. Biol; 20: 2743 - 2754.  
 Ute Schaeper, et.al.(2000) J. Cell Biol; 149: 1419.  
 Miyuki Honma, et.al. (2006) Genes Cells; 11: 143 - 151.

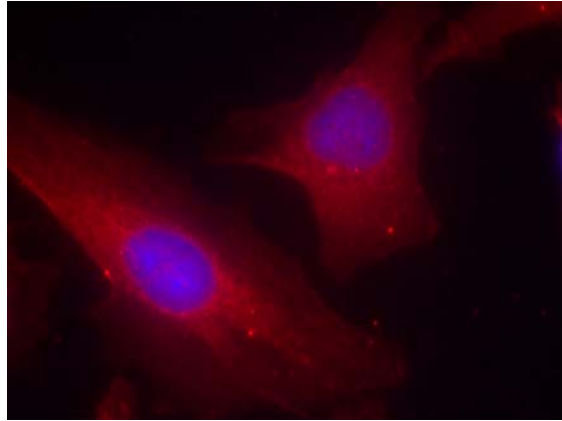


Peptide                      -                      +

Immunohistochemical analysis of paraffin-embedded human breast carcinoma tissue using p56Dok-2 (Ab-299) antibody (#21270).



Western blot analysis of extracts from K562 cells, using p56Dok-2 (Ab-299) antibody (#21270, Line 1 and 2) and p56Dok-2 (phospho-Tyr299) antibody (#11278, Line 3 and 4).



Immunofluorescence staining of methanol-fixed HeLa cells using p56Dok-2 (Ab-299) antibody (#21270, Red).