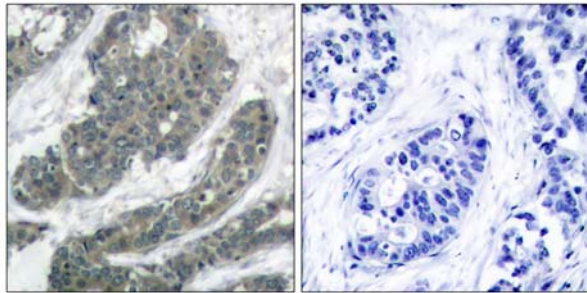
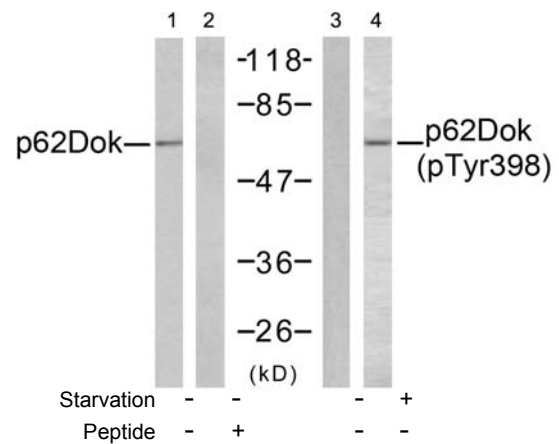


- Catalog Number:** 21269-1, 21269-2  
**Amount:** 50µg/50µl, 100µg/100µl  
**Swiss-Prot No. :** Q99704  
**Form of Antibody:** Rabbit IgG in phosphate buffered saline (without Mg<sup>2+</sup> and Ca<sup>2+</sup>), pH 7.4, 150mM NaCl, 0.02% sodium azide and 50% glycerol.  
**Storage/Stability:** Store at -20°C/1 year  
**Immunogen:** The antiserum was produced against synthesized non-phosphopeptide derived from human p62Dok around the phosphorylation site of tyrosine 398 (E-G-Y<sup>P</sup>-E-L).  
**Purification:** The antibody was affinity-purified from rabbit antiserum by affinity-chromatography using epitope-specific immunogen.  
**Specificity/Sensitivity:** p62Dok (Ab-398) antibody detects endogenous levels of total p62Dok protein.  
**Reactivity:** Human, Mouse, Rat  
**Applications:** WB: 1:500~1:1000    IHC: 1:50~1:100    IF:1:100~1:200  
**References:** Michael J. Wick, et, al. (2001) J. Biol. Chem; 276: 42843 - 42850.  
 Paul D. Simoncic, et, al. (2006) Mol. Cell. Biol; 26: 4149 - 4160.  
 Nadia Dubé, et, al. (2004) PNAS; 101: 1834.  
 Adam C. Yopp, et al. (2005) J. Immunol; 175: 2913 - 2924.

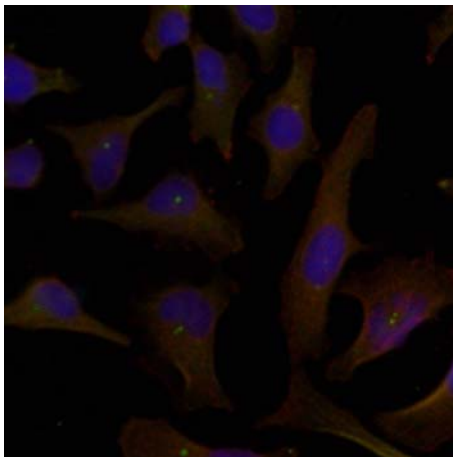


Peptide                      -                      +

Immunohistochemical analysis of paraffin-embedded human breast carcinoma tissue using p62Dok (Ab-398) antibody (#21269).



Western blot analysis of extracts from K562 cells, using p62Dok (Ab-398) antibody (#21269, Line 1 and 2) and p62Dok (phospho-Tyr398) antibody (#11277, Line 3 and 4).



Immunofluorescence staining of methanol-fixed HeLa cells using p62Dok (Ab-398) antibody (#21269, Red).