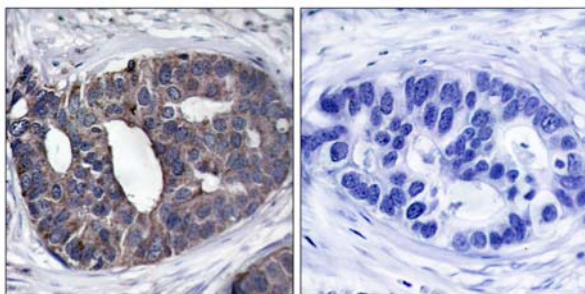
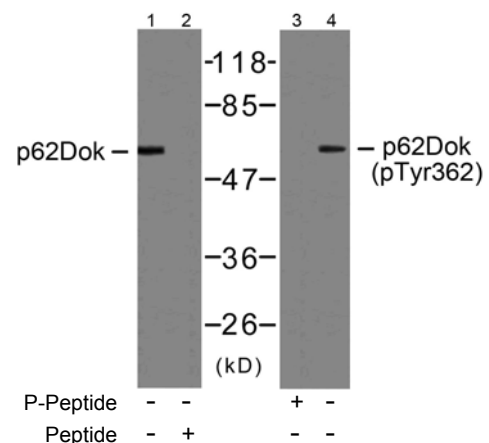


- Catalog Number:** 21268-1, 21268-2
Amount: 50µg/50µl, 100µg/100µl
Swiss-Prot No. : Q99704
Form of Antibody: Rabbit IgG in phosphate buffered saline (without Mg²⁺ and Ca²⁺), pH 7.4, 150mM NaCl, 0.02% sodium azide and 50% glycerol.
Storage/Stability: Store at -20°C/1 year
Immunogen: The antiserum was produced against synthesized non-phosphopeptide derived from human p62Dok around the phosphorylation site of tyrosine 362 (P-I-Y^P-D-E).
Purification: The antibody was affinity-purified from rabbit antiserum by affinity-chromatography using epitope-specific immunogen.
Specificity/Sensitivity: p62Dok (Ab-362) antibody detects endogenous levels of total p62Dok protein.
Reactivity: Human, Mouse, Rat
Applications: WB: 1:500~1:1000 IHC: 1:50~1:100
References: Zhou Songyang, et.al. (2001) J. Biol. Chem ; 276: 2459 - 2465.
 Jean-Guy Némorin, et.al.(2000) J. Biol. Chem ; 275: 14590.
 Yuji Yamanashi, et.al.(2000) Genes & Dev ; 14: 11.
 Ibuki Kato, et.al.(2002) J. Immunol ; 168: 629.



P-Peptide - +

Immunohistochemical analysis of paraffin-embedded human breast carcinoma tissue using p62Dok (Ab-362) antibody (#21268).



Western blot analysis of extracts from Jurkat cells, using p62Dok (Ab-362) antibody (#21268, Line 1 and 2) and p62Dok (phospho-Tyr362) antibody (#11276, Line 3 and 4).