

#21265

CREB (Ab-129) Antibody

Catalog: #21265-1 50µl **Orders:** order@signalwayantibody.com
#21265-2 100µl **Support:** tech@signalwayantibody.com
Storage: Store at -20°C/1 year **Web:** www.signalwayantibody.com



| Application | Species Reactivity | Source | Molecular Wt. |
|-------------|--------------------|----------------------|---------------|
| WB IHC | Human Mouse Rat | Rabbit Polyclonal Ab | 43KD |

Description: Antibodies were produced by immunizing rabbits with synthetic peptide and KLH conjugates. Antibodies were purified by affinity-chromatography using epitope-specific peptide.

Specificity: The antibody detects endogenous level of total CREB protein.

Immunogen: Peptide sequence around aa.127~131 (I-L-S-R-R) derived from Human CREB.

Formulation: Supplied at 1.0mg/mL in phosphate buffered saline (without Mg²⁺ and Ca²⁺), pH 7.4, 150mM NaCl, 0.02% sodium azide and 50% glycerol.

Synonyms: CREB-1 CREB1

Accession No.: Swiss-Prot#: P16220 NCBI Gene#: 1385
NCBI Protein#: NP_004370.1

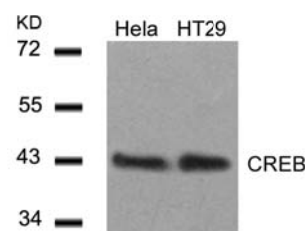
Background: CREB1 is a transcription factor that is a member of the bZIP family of DNA binding proteins. It binds as a homodimer to the CRE (cAMP-Responsive Element), an octameric palindrome containing a conserved core sequence, 5-prime-TGACG-3-prime. It consists of two transcript variants encoding respective isoforms produced by alternate splicing. It is mapped to 2q32.3-q34. It is phosphorylated by several protein kinases and induces transcription of genes in response to hormonal stimulation of the cAMP pathway. CREB1 is crucial for the consolidation of long-term conditioned fear memories, but not for encoding, storage, or retrieval of these memories. It is required for the stability of reactivated or retrieved conditioned fear memories.

References:

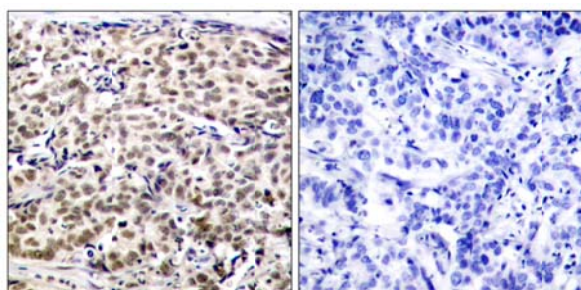
Chrystelle V. Garat, et al. (2006) Mol. Cell. Biol ; 26: 4934 - 4948.
Lilah Rothen, et al. (2004) Mol. Pharmacol ; 66: 1536 - 1543.
Darren R. Tyson, et al. (2002) Endocrinology; 143: 674.
Kyung-Woo Park, et al. (2003) Arterioscler. Thromb. Vasc. Biol ; 23: 1364.

Recommended Dilutions:

Western blotting 1:500~1:1000
Immunohistochemistry 1:50~1:100



Western blot analysis of extracts from HeLa and HT29 cells using CREB (Ab-129) Antibody #21265.



Immunohistochemical analysis of paraffin-embedded human breast carcinoma tissue using CREB (Ab-129) Antibody #21265 (left) or the same antibody preincubated with blocking peptide (right).

Citation:

If you publish research using #21265 please [let us know](#).

Related Pathway: MAPK, Cancer/Apoptosis, Chromatin/Transcription, Neuroscience

Note: For western blotting, incubate membrane with diluted antibody in 5% nonfat milk, 1X TBS, 0.1% Tween-20 at 4°C with gentle shaking, overnight.

This product is for in vitro research use only and is not intended for use in humans or animals.