

#21264

Cortactin (Ab-466) Antibody

Catalog: #21264-1 50µl **Orders:** order@signalwayantibody.com
#21264-2 100µl **Support:** tech@signalwayantibody.com
Storage: Store at -20°C/1 year **Web:** www.signalwayantibody.com



Application	Species Reactivity	Source	Molecular Wt.
WB IHC	Human Mouse Rat	Rabbit Polyclonal Ab	85KD

Description: Antibodies were produced by immunizing rabbits with synthetic peptide and KLH conjugates. Antibodies were purified by affinity-chromatography using epitope-specific peptide.

Specificity: The antibody detects endogenous level of total Cortactin protein.

Immunogen: Peptide sequence around aa.464~468 (P-V-Y-E-T) derived from Human CORTACTIN.

Formulation: Supplied at 1.0mg/mL in phosphate buffered saline (without Mg²⁺ and Ca²⁺), pH 7.4, 150mM NaCl, 0.02% sodium azide and 50% glycerol.

Synonyms: Amplexin CTTN EMS1 SRC8

Accession No.: Swiss-Prot#: Q14247 NCBI Gene#: 2017
NCBI Protein#: NP_005222.2

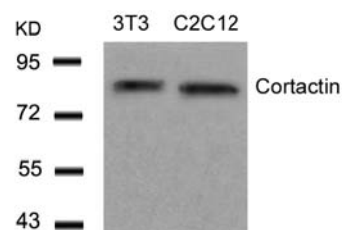
Background: Cortactin is overexpressed in breast cancer and squamous cell carcinomas of the head and neck. The encoded protein is localized in the cytoplasm and in areas of the cell-substratum contacts. This gene has two roles: (1) regulating the interactions between components of adherens-type junctions and (2) organizing the cytoskeleton and cell adhesion structures of epithelia and carcinoma cells. During apoptosis, the encoded protein is degraded in a caspase-dependent manner. The aberrant regulation of this gene contributes to tumor cell invasion and metastasis. Two splice variants that encode different isoforms have been identified for this gene.

References:

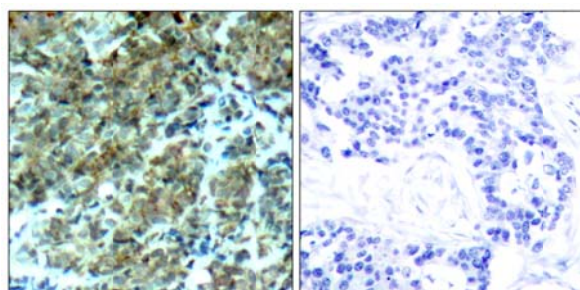
Luo C, et al. (2006) J Biol Chem ; 281(40):30081-30093
Head JA, et al. (2003) Mol Biol Cell ;14(8):3216-3229
Li Y, et al. (2000) J Biol Chem ; 275(47): 37187-37193
Kinley AW, et al. (2003) Curr Biol ; 13(5): 384-393

Recommended Dilutions:

Western blotting 1:500~1:1000
Immunohistochemistry 1:50~1:100



Western blot analysis of extracts from 3T3 and C2C12 cells using Cortactin (Ab-466) Antibody #21264.



Immunohistochemical analysis of paraffin-embedded human breast carcinoma tissue using Cortactin (Ab-466) Antibody #21264 (left) or the same antibody preincubated with blocking peptide (right).

Citation:

Nobuo Terada, Nobuhiko Ohno, Sei Saitoh, et al. Involvement of dynamin-2 in formation of discoid vesicles in urinary bladder umbrella cells. Cell Tissue Res: 337:91-102. (2009)

If you publish research using #21264 please [let us know](#).

Related Pathway: Cytoskeletal/Adhesion

Note: For western blotting, incubate membrane with diluted antibody in 5% nonfat milk, 1X TBS, 0.1% Tween-20 at 4°C with gentle shaking, overnight.

This product is for in vitro research use only and is not intended for use in humans or animals.