

#21250

Connexin 43 (Ab-367) Antibody

Catalog: #21250-1 50µl **Orders:** order@signalwayantibody.com
#21250-2 100µl **Support:** tech@signalwayantibody.com
Storage: Store at -20°C/1 year **Web:** www.signalwayantibody.com



Application	Species Reactivity	Source	Molecular Wt.
WB IHC	Human Mouse Rat	Rabbit Polyclonal Ab	43KD

Description: Antibodies were produced by immunizing rabbits with synthetic peptide and KLH conjugates. Antibodies were purified by affinity-chromatography using epitope-specific peptide.

Specificity: The antibody detects endogenous level of total Connexin43 protein.

Immunogen: Peptide sequence around aa. 365~369 (R-A-S-S-R) derived from Human Connexin 43.

Formulation: Supplied at 1.0mg/mL in phosphate buffered saline (without Mg²⁺ and Ca²⁺), pH 7.4, 150mM NaCl, 0.02% sodium azide and 50% glycerol.

Synonyms: CX43 CXA1 CXN-43 Connexin 43 GJA1

Accession No.: Swiss-Prot#: P17302 NCBI Gene#: 2697
NCBI Protein#: NP_000156.1

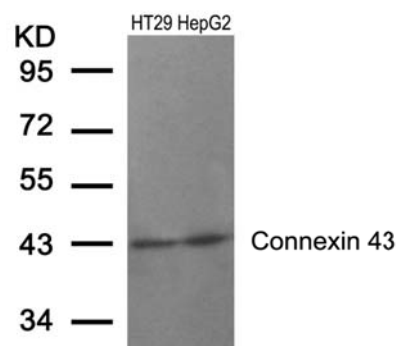
Background: One gap junction consists of a cluster of closely packed pairs of transmembrane channels, the connexons, through which materials of low MW diffuse from one cell to a neighboring cell. May play a critical role in the physiology of hearing by participating in the recycling of potassium to the cochlear endolymph.

References:

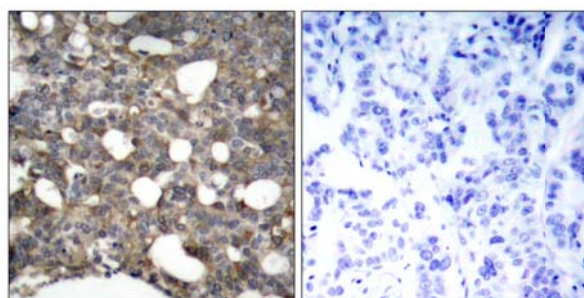
Joell L. Solan¹, et al. (2003) Cell Science 116: 2203-2211
Satoshi Matsushita, et al. (2006) Histochemistry and Cytochemistry 54 (3): 343-353,
Xiaoyong Bao, et al. (2004) Cell Physiol 286: C647-C654
W. E. I. Li, et al.(1998) European Journal of Neuroscience 10: 2444

Recommended Dilutions:

Western blotting 1:500~1:1000
Immunohistochemistry 1:50~1:100



Western blot analysis of extracts from HT29 and HepG2 cells using Connexin 43 (Ab-367) Antibody #21250.



Immunohistochemical analysis of paraffin-embedded human breast carcinoma tissue using Connexin 43 (Ab-367) Antibody #21250 (left) or the same antibody preincubated with blocking peptide (right).

Citation:

If you publish research using #21250 please [let us know](#).

Related Pathway: Cytoskeletal/Adhesion, Channel

Note: For western blotting, incubate membrane with diluted antibody in 5% nonfat milk, 1X TBS, 0.1% Tween-20 at 4°C with gentle shaking, overnight.