

#21235

eNOS (Ab-495) Antibody

Catalog: #21235-1 50µl **Orders:** order@signalwayantibody.com
#21235-2 100µl **Support:** tech@signalwayantibody.com
Storage: Store at -20°C/1 year **Web:** www.signalwayantibody.com



Application	Species Reactivity	Source	Molecular Wt.
IF	Human Mouse Rat	Rabbit Polyconal Ab	140KD

Description: Antibodies were produced by immunizing rabbits with synthetic peptide and KLH conjugates. Antibodies were purified by affinity-chromatography using epitope-specific peptide.

Specificity: The antibody detects endogenous level of total eNOS protein.

Immunogen: Peptide sequence around aa.493~497 (K-K-T-F-K) derived from Human eNOS.

Formulation: Supplied at 1.0mg/mL in phosphate buffered saline (without Mg²⁺ and Ca²⁺), pH 7.4, 150mM NaCl, 0.02% sodium azide and 50% glycerol.

Synonyms: Constitutive NOS EC-NOS ECNOS NOS3 NOSIII

Accession No.: Swiss-Prot#: P29474 NCBI Gene#: 4846
NCBI Protein#: NP_000594.2

Background: Produces nitric oxide (NO) which is implicated in vascular smooth muscle relaxation through a cGMP-mediated signal transduction pathway. NO mediates vascular endothelial growth factor (VEGF)-induced angiogenesis in coronary vessels and promotes blood clotting through the activation of platelets.

References:

Moreno H Jr.(2008)Breast Cancer Res Treat. 109(1):181-2.
Lorenz M,et al.(2007)FASEB J. May;21(7):1556-64.
Lin HI,et al.(2006)Transplant Proc. Sep;38(7):2203-6.

Citation:

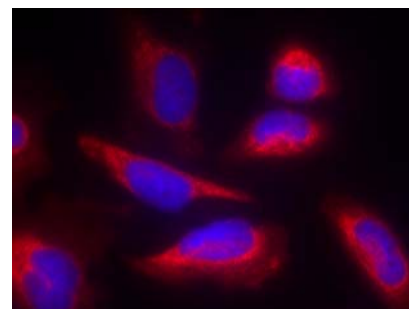
If you publish research using #21235 please [let us know](#).

Related Pathway: Akt, Insulin/Glucose

Note: For western blotting, incubate membrane with diluted antibody in 5% nonfat milk, 1X TBS, 0.1% Tween-20 at 4°C with gentle shaking, overnight.

Recommended Dilutions:

Immunofluorescence 1:100~1:200



Immunofluorescence staining of methanol-fixed HeLa cells using eNOS (Ab-495) Antibody #21235.