

#21232

c-Kit (Ab-721) Antibody

Catalog: #21232-1 50µl **Orders:** order@signalwayantibody.com
#21232-2 100µl **Support:** tech@signalwayantibody.com
Storage: Store at -20°C/1 year **Web:** www.signalwayantibody.com



Application	Species Reactivity	Source	Molecular Wt.
WB	Human Mouse Rat	Rabbit Polyconal Ab	145KD

Description: Antibodies were produced by immunizing rabbits with synthetic peptide and KLH conjugates. Antibodies were purified by affinity-chromatography using epitope-specific peptide.

Specificity: The antibody detects endogenous level of total c-Kit protein.

Immunogen: Peptide sequence around aa.719~723 (N-E-Y-M-D) derived from Human c-Kit.

Formulation: Supplied at 1.0mg/mL in phosphate buffered saline (without Mg²⁺ and Ca²⁺), pH 7.4, 150mM NaCl, 0.02% sodium azide and 50% glycerol.

Synonyms: KIT CD117 SCFR PBT

Accession No.: Swiss-Prot#: P11362 NCBI Gene#: 3815
NCBI Protein#: NP_000213.1

Background: This is the receptor for stem cell factor (mast cell growth factor). It has a tyrosine-protein kinase activity. Binding of the ligands leads to the autophosphorylation of KIT and its association with substrates such as phosphatidylinositol 3-kinase (Pi3K)

References:

Kimura W, et al. (2007) Hepatogastroenterology. 54(80):2203-8.
Naeem M, et al. (2002) Hum Pathol. 33(12):1182-7.
Jankulovski N, et al. (2006) Prilozi. 27(2):59-70.

Citation:

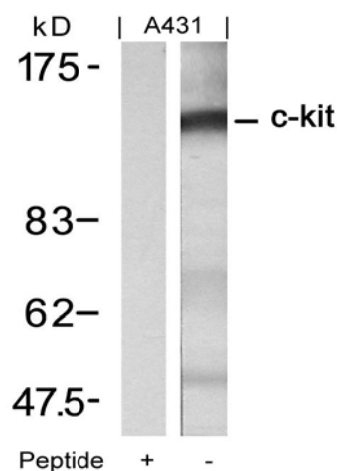
If you publish research using #21232 please [let us know](#).

Related Pathway: Translation

Note: For western blotting, incubate membrane with diluted antibody in 5% nonfat milk, 1X TBS, 0.1% Tween-20 at 4°C with gentle shaking, overnight.

Recommended Dilutions:

Western blotting 1:500~1:1000



Western blot analysis of extracts from A431 cells using c-Kit (Ab-721) Antibody #21232 and the same antibody preincubated with blocking peptide.