

#21209

Pyk2 (Ab-402) Antibody

Catalog: #21209-1 50µl **Orders:** order@signalwayantibody.com
#21209-2 100µl **Support:** tech@signalwayantibody.com
Storage: Store at -20°C/1 year **Web:** www.signalwayantibody.com



Application	Species Reactivity	Source	Molecular Wt.
WB IHC IF	Human Mouse Rat	Rabbit Polyconal Ab	140KD

Description: Antibodies were produced by immunizing rabbits with synthetic peptide and KLH conjugates. Antibodies were purified by affinity-chromatography using epitope-specific peptide.

Specificity: The antibody detects endogenous level of total Pyk2 protein.

Immunogen: Peptide sequence around aa.400~404 (D-I-Y-A-E) derived from Human Pyk2.

Formulation: Supplied at 1.0mg/mL in phosphate buffered saline (without Mg²⁺ and Ca²⁺), pH 7.4, 150mM NaCl, 0.02% sodium azide and 50% glycerol.

Synonyms: FADK 2 FAK2 Focal adhesion kinase 2 PTK2B
Proline-rich tyrosine kinase 2 RAFTK

Accession No.: Swiss-Prot#: Q14289 NCBI Gene#: 2185
NCBI Protein#: NP_004094.3

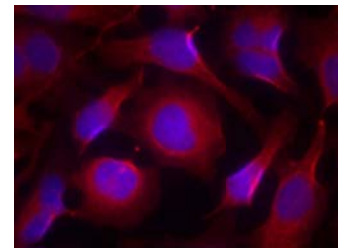
Background: Involved in calcium induced regulation of ion channel and activation of the map kinase signaling pathway. May represent an important signaling intermediate between neuropeptide activated receptors or neurotransmitters that increase calcium flux and the downstream signals that regulate neuronal activity. Interacts with the SH2 domain of Grb2. May phosphorylate the voltage-gated potassium channel protein Kv1.2. Its activation is highly correlated with the stimulation of c-Jun N-terminal kinase activity. Involved in osmotic stress-dependent SNCA 'Tyr-125' phosphorylation.

References:

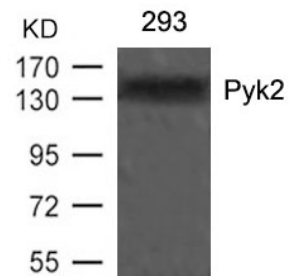
Gluck SL, et al. (2004) J Clin Invest; 114(12): 1696-1699
Benzing T, et al. (2001) Proc Natl Acad Sci U S A; 98(17): 9784-9789
Tian D, et al. (2002) Mol Cell Biol; 22(8): 2650-2662
Lu Z, et al. (2001) Mol Cell Biol; 21(12): 4016-4031
Krishnan HH, et al. (2006) J Virol; 80(3): 1167-1180

Recommended Dilutions:

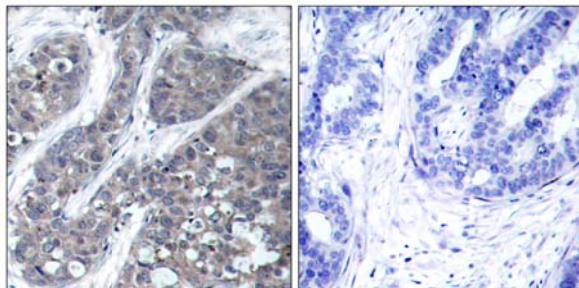
Western blotting 1:500~1:1000
Immunohistochemistry 1:50~1:100
Immunofluorescence 1:100~1:200



Immunofluorescence staining of methanol-fixed HeLa cells using Pyk2 (Ab-402) Antibody #21209.



Western blot analysis of extracts from 293 cells using Pyk2 (Ab-402) Antibody #21209.



Immunohistochemical analysis of paraffin-embedded human breast carcinoma tissue using Pyk2 (Ab-402) Antibody #21209 (left) or the same antibody preincubated with blocking peptide (right).

Citation:

If you publish research using #21209 please [let us know](#).

Related Pathway: Akt, MAPK, Cytoskeletal/Adhesion, Kinase/Phosphatases

Note: For western blotting, incubate membrane with diluted antibody in 5% nonfat milk, 1X TBS, 0.1% Tween-20 at 4°C with gentle shaking, overnight.

This product is for in vitro research use only and is not intended for use in humans or animals.