

#21205

GABRB1 (Ab-434) Antibody

Catalog: #21205-1 50µl **Orders:** order@signalwayantibody.com
#21205-2 100µl **Support:** tech@signalwayantibody.com
Storage: Store at -20°C/1 year **Web:** www.signalwayantibody.com



Application	Species Reactivity	Source	Molecular Wt.
WB	Human Mouse Rat	Rabbit Polyclonal Ab	54KD

Description: Antibodies were produced by immunizing rabbits with synthetic peptide and KLH conjugates. Antibodies were purified by affinity-chromatography using epitope-specific peptide.

Specificity: The antibody detects endogenous level of total GABRB1 protein.

Immunogen: Peptide sequence around aa.432~436 (R-A-S-Q-L) derived from Human GABRB1.

Formulation: Supplied at 1.0mg/mL in phosphate buffered saline (without Mg²⁺ and Ca²⁺), pH 7.4, 150mM NaCl, 0.02% sodium azide and 50% glycerol.

Synonyms: GABA(A) receptor GABA(A)R beta-1 GBRB1 GABA-RB

Accession No.: Swiss-Prot#: P18505 NCBI Gene#: 2560
NCBI Protein#: NP_000803.2

Background: The gamma-aminobutyric acid (GABA) A receptor is a multisubunit chloride channel that mediates the fastest inhibitory synaptic transmission in the central nervous system. This gene encodes GABA A receptor, beta 1 subunit. It is mapped to chromosome 4p12 in a cluster comprised of genes encoding alpha 4, alpha 2 and gamma 1 subunits of the GABA A receptor. Alteration of this gene is implicated in the pathogenetics of schizophrenia.

References:

Collins AL, et al. (2006) Neurogenetics ;7(3):167-174.
Ma DQ, et al. (2005) Am J Hum Genet ;77(3):377-388.
Edenberg HJ, et al. (2004) Am J Hum Genet ;74(4):705-714.

Citation:

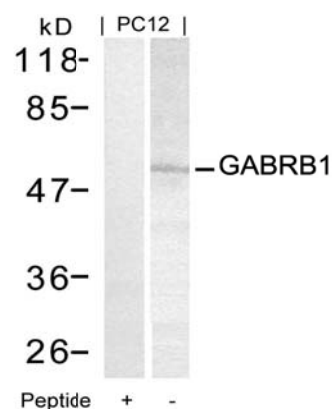
If you publish research using #21205 please [let us know](#).

Related Pathway: Receptors, Neuroscience, Channel

Note: For western blotting, incubate membrane with diluted antibody in 5% nonfat milk, 1X TBS, 0.1% Tween-20 at 4°C with gentle shaking, overnight.

Recommended Dilutions:

Western blotting 1:500~1:1000



Western blot analysis of extracts from PC12 cells using GABRB1 (Ab-434) Antibody #21205 and the same antibody preincubated with blocking peptide.