

#21202

Raf1 (Ab-338) Antibody

Catalog: #21202-1 50µl **Orders:** order@signalwayantibody.com
#21202-2 100µl **Support:** tech@signalwayantibody.com
Storage: Store at -20°C/1 year **Web:** www.signalwayantibody.com



Application	Species Reactivity	Source	Molecular Wt.
WB IHC	Human Mouse	Rabbit Polyconal Ab	73KD

Description: Antibodies were produced by immunizing rabbits with synthetic peptide and KLH conjugates. Antibodies were purified by affinity-chromatography using epitope-specific peptide.

Specificity: The antibody detects endogenous level of total Raf1 protein.

Immunogen: Peptide sequence around aa.336~340 (R-D-S-S-Y) derived from Human RAF.

Formulation: Supplied at 1.0mg/mL in phosphate buffered saline (without Mg²⁺ and Ca²⁺), pH 7.4, 150mM NaCl, 0.02% sodium azide and 50% glycerol.

Synonyms: C-RAF C-Raf CRAF

Accession No.: Swiss-Prot#: P04049 NCBI Gene#: 5894
NCBI Protein#: NP_002871.1

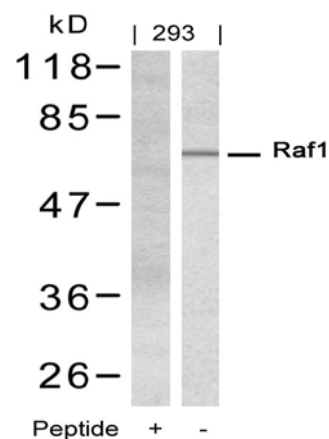
Background: Involved in the transduction of mitogenic signals from the cell membrane to the nucleus. Part of the Ras-dependent signaling pathway from receptors to the nucleus. Protects cells from apoptosis mediated by STK3.

References:

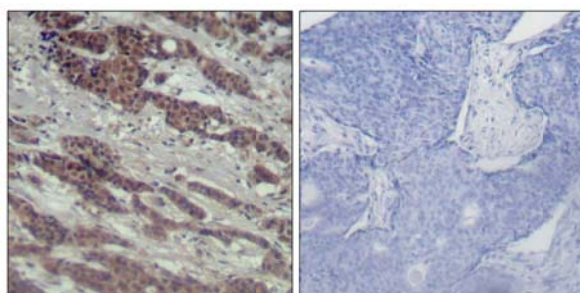
Adams DG, et al. (2005) J Biol Chem. 280(52):42644-54.
Miura S, et al. (2003) Biochem Biophys Res Commun. 306(4):924-9.
Noser JA, et al. (2007) Mol Ther. 15(8):1531-6.

Recommended Dilutions:

Western blotting 1:500~1:1000
Immunohistochemistry 1:50~1:100



Western blot analysis of extracts from 293 cells using Raf1 (Ab-338) Antibody #21202 and the same antibody preincubated with blocking peptide.



Immunohistochemical analysis of paraffin-embedded human breast carcinoma tissue using Raf1 (Ab-338) Antibody #21202 (left) or the same antibody preincubated with blocking peptide (right).

Citation:

If you publish research using #21202 please [let us know](#).

Related Pathway: MAPK, Akt, Cancer/Apoptosis, Cytoskeletal/Adhesion, Insulin/Glucose, Jak/Stat,

Note: For western blotting, incubate membrane with diluted antibody in 5% nonfat milk, 1X TBS, 0.1% Tween-20 at 4°C with gentle shaking, overnight.