

#21189

ADD1 (Ab-726) Antibody

Catalog: #21189-1 50µl **Orders:** order@signalwayantibody.com
#21189-2 100µl **Support:** tech@signalwayantibody.com
Storage: Store at -20°C/1 year **Web:** www.signalwayantibody.com



Application	Species Reactivity	Source	Molecular Wt.
WB IHC IF	Human Mouse Rat	Rabbit Polyclonal Ab	130KD

Description: Antibodies were produced by immunizing rabbits with synthetic peptide and KLH conjugates. Antibodies were purified by affinity-chromatography using epitope-specific peptide.

Specificity: The antibody detects endogenous level of total ADD1 protein.

Immunogen: Peptide sequence around aa.724~728 (T-P-S-F-L) derived from Human ADD1.

Formulation: Supplied at 1.0mg/mL in phosphate buffered saline (without Mg²⁺ and Ca²⁺), pH 7.4, 150mM NaCl, 0.02% sodium azide and 50% glycerol.

Synonyms: ADDA Erythrocyte adducin alpha subunit

Accession No.: Swiss-Prot#: P35611 NCBI Gene#: 118
NCBI Protein#: NP_001110.2

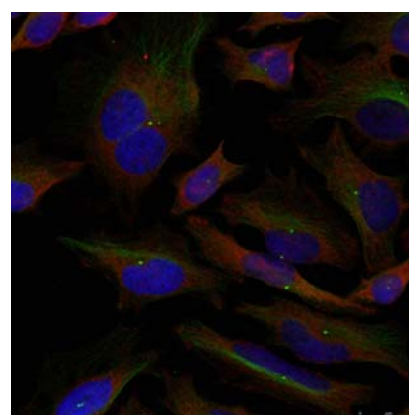
Background: Adducins are a family of cytoskeleton proteins encoded by three genes (alpha, beta, gamma). Adducin is a heterodimeric protein that consists of related subunits, which are produced from distinct genes but share a similar structure. Alpha- and beta-adducin include a protease-resistant N-terminal region and a protease-sensitive, hydrophilic C-terminal region. Alpha- and gamma-adducins are ubiquitously expressed. In contrast, beta-adducin is expressed at high levels in brain and hematopoietic tissues. Adducin binds with high affinity to Ca(2+)/calmodulin and is a substrate for protein kinases A and C. Alternative splicing results in multiple variants encoding distinct isoforms; however, not all variants have been fully described.

References:

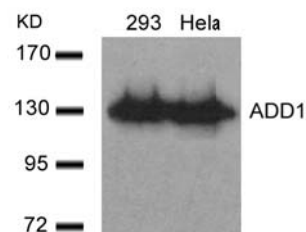
Pariser H, et al. Proc Natl Acad Sci USA 2005 Aug 30; 102(35): 12407-12
Tamaru S, et al. Biochem Biophys Res Commun 2005 Jul 01; 332(2): 347-51
Barkalow KL, et al. J Cell Biol 2003 May 12; 161(3): 557-70

Recommended Dilutions:

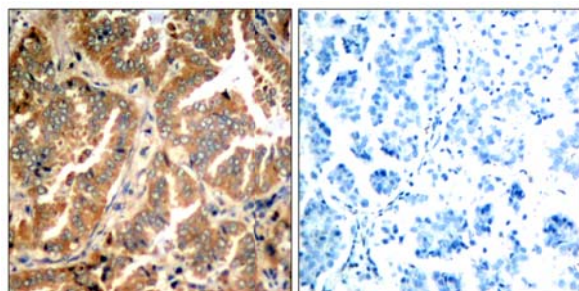
Western blotting 1:500~1:1000
Immunohistochemistry 1:50~1:100
Immunofluorescence 1:100~1:200



Immunofluorescence staining of methanol-fixed HeLa cells using ADD1 (Ab-726) Antibody #21189.



Western blot analysis of extracts from 293 and HeLa cells using ADD1 (Ab-726) Antibody #21189.



Immunohistochemical analysis of paraffin-embedded human lung carcinoma tissue using ADD1 (Ab-726) Antibody #21189 (left) or the same antibody preincubated with blocking peptide (right).

Citation:

If you publish research using #21189 please [let us know](#).

Related Pathway: Cytoskeletal/Adhesion,

Note: For western blotting, incubate membrane with diluted antibody in 5% nonfat milk, 1X TBS, 0.1% Tween-20 at 4°C with gentle shaking, overnight.

This product is for in vitro research use only and is not intended for use in humans or animals.