

#21187

FLT3 (Ab-591) Antibody

Catalog: #21187-1 50µl **Orders:** order@signalwayantibody.com
#21187-2 100µl **Support:** tech@signalwayantibody.com
Storage: Store at -20°C/1 year **Web:** www.signalwayantibody.com



Application	Species Reactivity	Source	Molecular Wt.
WB IF	Human	Rabbit Polyconal Ab	130 160KD

Description: Antibodies were produced by immunizing rabbits with synthetic peptide and KLH conjugates. Antibodies were purified by affinity-chromatography using epitope-specific peptide.

Specificity: The antibody detects endogenous level of total FLT3 protein.

Immunogen: Peptide sequence around aa.589~593 (Y-F-Y-V-D) derived from Human FLT3.

Formulation: Supplied at 1.0mg/mL in phosphate buffered saline (without Mg²⁺ and Ca²⁺), pH 7.4, 150mM NaCl, 0.02% sodium azide and 50% glycerol.

Synonyms: CD135 FLK-2 FLT-3 FLT3 STK-1

Accession No.: Swiss-Prot#: P36888 NCBI Gene#: 2322
NCBI Protein#: NP_004110.2

Background: FLT3 encodes a class III receptor tyrosine kinase that regulates hematopoiesis. The receptor consists of an extracellular domain composed of five immunoglobulin-like domains, one transmembrane region, and a cytoplasmic kinase domain split into two parts by a kinase-insert domain. The receptor is activated by binding of the fms-related tyrosine kinase 3 ligand to the extracellular domain, which induces homodimer formation in the plasma membrane leading to autophosphorylation of the receptor. The activated receptor kinase subsequently phosphorylates and activates multiple cytoplasmic effector molecules in pathways involved in apoptosis, proliferation, and differentiation of hematopoietic cells in bone marrow. Mutations that result in the constitutive activation of this receptor result in acute myeloid leukemia and acute lymphoblastic leukemia.

References:

Sekine S et.al. (2008) J Immunol. ;180(12):8126-34
Pratz K et.al. (2008) Leuk Lymphoma. 2008 ;49(5):852-63.
Al Shaer L et.al. (2008) Br J Haematol. 141(4):483-93.

Citation:

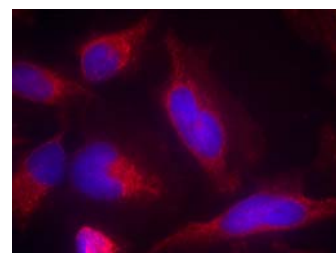
If you publish research using #21187 please [let us know](#).

Related Pathway: MAPK, Akt

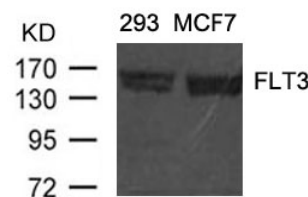
Note: For western blotting, incubate membrane with diluted antibody in 5% nonfat milk, 1X TBS, 0.1% Tween-20 at 4°C with gentle shaking, overnight.

Recommended Dilutions:

Western blotting 1:500~1:1000
Immunofluorescence 1:100~1:200



Immunofluorescence staining of methanol-fixed HeLa cells using FLT3 (Ab-591) Antibody #21187.



Western blot analysis of extracts from 293 and MCF cells using FLT3 (Ab-591) Antibody #21187.