

#21183

## $\alpha$ -Synuclein (Ab-129) Antibody

**Catalog:** #21183-1 50 $\mu$ l **Orders:** [order@signalwayantibody.com](mailto:order@signalwayantibody.com)  
#21183-2 100 $\mu$ l **Support:** [tech@signalwayantibody.com](mailto:tech@signalwayantibody.com)  
**Storage:** Store at -20°C/1 year **Web:** [www.signalwayantibody.com](http://www.signalwayantibody.com)



Application	Species Reactivity	Source	Molecular Wt.
WB	Human Mouse Rat	Rabbit Polyconal Ab	18KD

**Description:** Antibodies were produced by immunizing rabbits with synthetic peptide and KLH conjugates. Antibodies were purified by affinity-chromatography using epitope-specific peptide.

**Specificity:** The antibody detects endogenous level of total Synuclein protein.

**Immunogen:** Peptide sequence around aa.127~131 (M-P-S-E-E) derived from Human  $\alpha$ -Synuclein.

**Formulation:** Supplied at 1.0mg/mL in phosphate buffered saline (without Mg<sup>2+</sup> and Ca<sup>2+</sup>), pH 7.4, 150mM NaCl, 0.02% sodium azide and 50% glycerol.

**Synonyms:** NACP SYN SYUA alpha-synuclein

**Accession No.:** Swiss-Prot#: P37840 NCBI Gene#: 6622  
NCBI Protein#: NP\_000336.1

**Background:** SncA is a member of the synuclein family of structurally related proteins that are prominently expressed in the central nervous system, which also includes beta- and gamma-synuclein. Synucleins are abundantly expressed in the brain and SncA and Snc-Beta inhibit phospholipase D2 selectively. SncA may serve to integrate presynaptic signaling and membrane trafficking. Aggregated SncA proteins form brain lesions that are hallmarks of neurodegenerative synucleinopathies. Defects in SncA play a role in the pathogenesis of Parkinson disease. SncA peptides are a major component of amyloid plaques in the brains of patients with Alzheimer disease. SncA shares 95% sequence homology with rat SncA. Rat SncA is specifically expressed in brain and is associated with synaptosomal membranes in neurons

### References:

Takahashi T, et al. J Biol Chem 2003 Oct 24; 278(43): 42225-33  
Ahn BH, et al. J Biol Chem 2002 Apr 05; 277(14): 12334-42  
Negro A, et al. FASEB J 2002 Feb; 16(2): 210-2  
Goldberg, et al. Nat. Cell Biol. 2000; 2, 115-119.

### Citation:

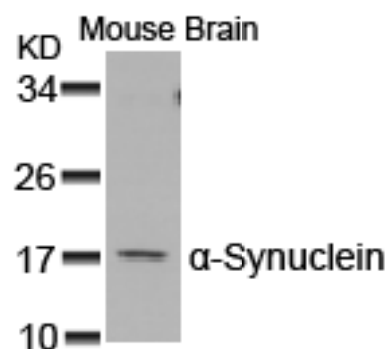
If you publish research using #21183 please [let us know](#).

**Related Pathway:** Neuroscience

**Note:** For western blotting, incubate membrane with diluted antibody in 5% nonfat milk, 1X TBS, 0.1% Tween-20 at 4°C with gentle shaking, overnight.

### Recommended Dilutions:

Western blotting 1:500~1:1000



Western blot analysis of extracts from Mouse Brain tissue using  $\alpha$ -Synuclein (Ab-129) Antibody #21183.