

#21182

p70 S6 Kinase (Ab-389) Antibody

Catalog: #21182-1 50µl **Orders:** order@signalwayantibody.com
#21182-2 100µl **Support:** tech@signalwayantibody.com
Storage: Store at -20°C/1 year **Web:** www.signalwayantibody.com



Application	Species Reactivity	Source	Molecular Wt.
WB IF	Human Mouse Rat	Rabbit Polyclonal Ab	70 85KD

Description: Antibodies were produced by immunizing rabbits with synthetic peptide and KLH conjugates. Antibodies were purified by affinity-chromatography using epitope-specific peptide.

Specificity: The antibody detects endogenous level of total p70 S6 Kinase protein.

Immunogen: Peptide sequence around aa.387~391 (G-F-T-Y-V) derived from Human p70 S6 Kinase.

Formulation: Supplied at 1.0mg/mL in phosphate buffered saline (without Mg²⁺ and Ca²⁺), pH 7.4, 150mM NaCl, 0.02% sodium azide and 50% glycerol.

Synonyms: KS6B1 P70-S6K RPS6KB1 S6K

Accession No.: Swiss-Prot#: P23443 NCBI Gene#: 6198
NCBI Protein#: NP_003152.1

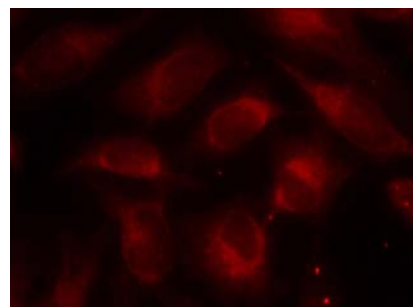
Background: Phosphorylates specifically ribosomal protein S6 in response to insulin or several classes of mitogens. Promotes protein synthesis by phosphorylating PDCD4 at 'Ser-67' and targeting it for degradation.

References:

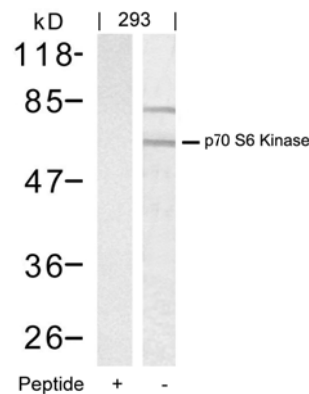
Satoru Eguchi et al. (1999) J Biol Chem, Vol. 274: 36843-36851
Papst PJ, et al. (1998) J Biol Chem. 273(24):15077-84.
Ulrike Krause et al. (2002) Eur. J. Biochem. 269: 3751-3759 c
Le, X.F, et al. (2003) Oncogene 22: 484-97

Recommended Dilutions:

Western blotting 1:500~1:1000
Immunofluorescence 1:100~1:200



Immunofluorescence staining of methanol-fixed HeLa cells using p70 S6 Kinase(Ab-389) Antibody #21182.



Western blot analysis of extracts from 293 cells using p70 S6 Kinase (Ab-389) Antibody #21182 (Lane 2) and the same antibody preincubated with blocking peptide (Lane1).

Citation:

If you publish research using #21182 please [let us know](#).

Related Pathway: Cancer/Apoptosis, Akt, Chromatin/Transcription, Insulin/Glucose

Note: For western blotting, incubate membrane with diluted antibody in 5% nonfat milk, 1X TBS, 0.1% Tween-20 at 4°C with gentle shaking, overnight.