

#21170

## eNOS (Ab-1177) Antibody

**Catalog:** #21170-1 50µl **Orders:** [order@signalwayantibody.com](mailto:order@signalwayantibody.com)  
#21170-2 100µl **Support:** [tech@signalwayantibody.com](mailto:tech@signalwayantibody.com)  
**Storage:** Store at -20°C/1 year **Web:** [www.signalwayantibody.com](http://www.signalwayantibody.com)



Application	Species Reactivity	Source	Molecular Wt.
WB IF	Human Mouse Rat	Rabbit Polyconal Ab	140KD

**Description:** Antibodies were produced by immunizing rabbits with synthetic peptide and KLH conjugates. Antibodies were purified by affinity-chromatography using epitope-specific peptide.

**Specificity:** The antibody detects endogenous level of total eNOS protein.

**Immunogen:** Peptide sequence around aa.1175~1179 (T-Q-S-F-S) derived from Human eNOS.

**Formulation:** Supplied at 1.0mg/mL in phosphate buffered saline (without Mg<sup>2+</sup> and Ca<sup>2+</sup>), pH 7.4, 150mM NaCl, 0.02% sodium azide and 50% glycerol.

**Synonyms:** Constitutive NOS EC-NOS ECNOS NOS3 NOSIII

**Accession No.:** Swiss-Prot#: P29474 NCBI Gene#: 4846  
NCBI Protein#: NP\_000594.2

**Background:** Produces nitric oxide (NO) which is implicated in vascular smooth muscle relaxation through a cGMP-mediated signal transduction pathway. NO mediates vascular endothelial growth factor (VEGF)-induced angiogenesis in coronary vessels and promotes blood clotting through the activation of platelets.

### References:

Fulton, D. et al. (1999) Nature 399, 597-601.  
Harris, M.B. et al. (2001) J. Biol. Chem. 276, 16587-16591.  
Thomas, S.R. et al. (2002) J. Biol. Chem. 277, 6017-6024.

### Citation:

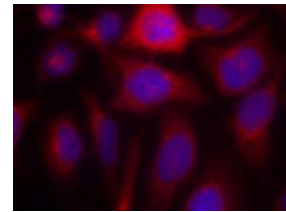
If you publish research using #21170 please [let us know](#).

**Related Pathway:** Akt, Insulin/Glucose

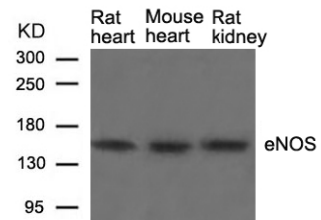
**Note:** For western blotting, incubate membrane with diluted antibody in 5% nonfat milk, 1X TBS, 0.1% Tween-20 at 4°C with gentle shaking, overnight.

### Recommended Dilutions:

Western blotting 1:500~1:1000  
Immunofluorescence 1:100~1:200



Immunofluorescence staining of methanol-fixed HeLa cells using eNOS (Ab-1177) Antibody #21170.



Western blot analysis of extracts from Rat heart, Mouse heart and Rat kidney tissue using eNOS (Ab-1177) Antibody #21170.