

#21164

cofilin (Ab-3) Antibody

Catalog: #21164-1 50µl **Orders:** order@signalwayantibody.com
#21164-2 100µl **Support:** tech@signalwayantibody.com
Storage: Store at -20°C/1 year **Web:** www.signalwayantibody.com



Application	Species Reactivity	Source	Molecular Wt.
WB IHC	Human Mouse Rat	Rabbit Polyconal Ab	19KD

Description: Antibodies were produced by immunizing rabbits with synthetic peptide and KLH conjugates. Antibodies were purified by affinity-chromatography using epitope-specific peptide.

Specificity: The antibody detects endogenous level of total cofilin protein.

Immunogen: Peptide sequence around aa. 1~5 (M-A-S-G-V) derived from Human cofilin.

Formulation: Supplied at 1.0mg/mL in phosphate buffered saline (without Mg²⁺ and Ca²⁺), pH 7.4, 150mM NaCl, 0.02% sodium azide and 50% glycerol.

Synonyms: CFL CFL1 COF1 Cofilin

Accession No.: Swiss-Prot#: P23528 NCBI Gene#: 1072
NCBI Protein#: NP_000213.1

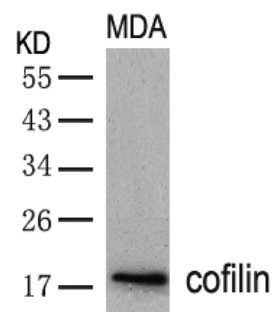
Background: Controls reversibly actin polymerization and depolymerization in a pH-sensitive manner. It has the ability to bind G- and F-actin in a 1:1 ratio of cofilin to actin. It is the major component of intranuclear and cytoplasmic actin rods.

References:

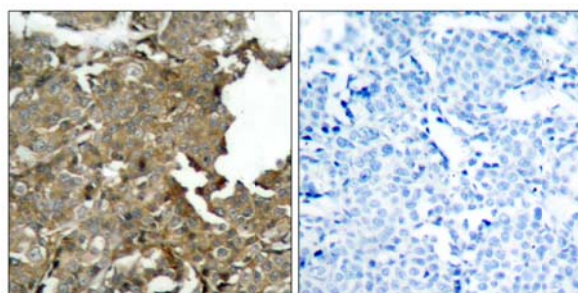
Kobayashi M, et al. (2006) EMBO J 25(4): 713-26.
Wang Y, et al. (2005) Biol Chem 280(13): 12683-9.
Smith-Beckerman DM, et al. (2005) Mol Cell Proteomics: 156-68.

Recommended Dilutions:

Western blotting 1:500~1:1000
Immunohistochemistry 1:50~1:100



Western blot analysis of extracts from MDA cells using cofilin (Ab-3) Antibody #21164.



Immunohistochemical analysis of paraffin-embedded human breast carcinoma tissue using cofilin (Ab-3) Antibody #21164 (left) or the same antibody preincubated with blocking peptide (right).

Citation:

If you publish research using #21164 please [let us know](#).

Related Pathway: Cytoskeletal/Adhesion

Note: For western blotting, incubate membrane with diluted antibody in 5% nonfat milk, 1X TBS, 0.1% Tween-20 at 4°C with gentle shaking, overnight.