

#21163

cdc25A (Ab-76) Antibody

Catalog: #21163-1 50µl **Orders:** order@signalwayantibody.com
#21163-2 100µl **Support:** tech@signalwayantibody.com
Storage: Store at -20°C/1 year **Web:** www.signalwayantibody.com



Application	Species Reactivity	Source	Molecular Wt.
WB	Human Mouse Rat	Rabbit Polyclonal Ab	70KD

Description: Antibodies were produced by immunizing rabbits with synthetic peptide and KLH conjugates. Antibodies were purified by affinity-chromatography using epitope-specific peptide.

Specificity: The antibody detects endogenous level of total cdc25A protein.

Immunogen: Peptide sequence around aa. 73~77 (M-G-S-S-E) derived from Human cdc25A.

Formulation: Supplied at 1.0mg/mL in phosphate buffered saline (without Mg²⁺ and Ca²⁺), pH 7.4, 150mM NaCl, 0.02% sodium azide and 50% glycerol.

Synonyms: CDC25M3 MPIP1

Accession No.: Swiss-Prot#: P30304 NCBI Gene#: 993
NCBI Protein#: NP_001780.2

Background: Tyrosine protein phosphatase which functions as a dosage-dependent inducer of mitotic progression. Directly dephosphorylates CDC2 and stimulates its kinase activity. Also dephosphorylates CDK2 in complex with cyclin E, in vitro.

References:

Jin J, et al. (2003) Genes 17(24): 3062-74.
Shimuta K, et al. (2002) EMBO J 21(14): 3694-703.

Citation:

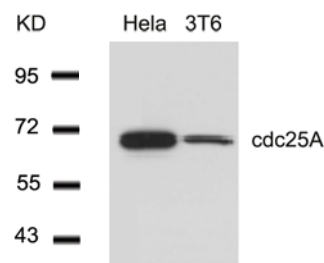
If you publish research using #21163 please [let us know](#).

Related Pathway: CellCycle, Kinase/Phosphatases

Note: For western blotting, incubate membrane with diluted antibody in 5% nonfat milk, 1X TBS, 0.1% Tween-20 at 4°C with gentle shaking, overnight.

Recommended Dilutions:

Western blotting 1:500~1:1000



Western blot analysis of extracts from HeLa and 3T6 cells using cdc25A (Ab-76) Antibody #21163.