

#21162

AFX (Ab-197) Antibody

Catalog: #21162-1 50µl **Orders:** order@signalwayantibody.com
#21162-2 100µl **Support:** tech@signalwayantibody.com
Storage: Store at -20°C/1 year **Web:** www.signalwayantibody.com



Application	Species Reactivity	Source	Molecular Wt.
WB IHC	Human Mouse Rat	Rabbit Polyconal Ab	65KD

Description: Antibodies were produced by immunizing rabbits with synthetic peptide and KLH conjugates. Antibodies were purified by affinity-chromatography using epitope-specific peptide.

Specificity: The antibody detects endogenous level of total AFX protein.

Immunogen: Peptide sequence around aa. 195~199 (A-A-S-M-D) derived from Human AFX.

Formulation: Supplied at 1.0mg/mL in phosphate buffered saline (without Mg²⁺ and Ca²⁺), pH 7.4, 150mM NaCl, 0.02% sodium azide and 50% glycerol.

Synonyms: AFX FOXO4 AFX1 Afxh

Accession No.: Swiss-Prot#: P98177 NCBI Gene#: 4303
NCBI Protein#: NP_001164402.1

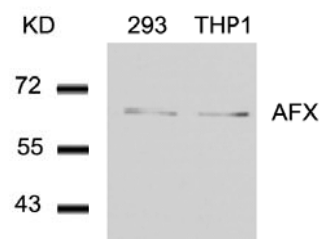
Background: Transcription factor involved in the regulation of the insulin signaling pathway. Binds to insulin-response elements (IREs) and can activate transcription of IGFBP1. Down-regulates expression of HIF1A and suppresses hypoxia-induced transcriptional activation of HIF1A-modulated genes. Also involved in negative regulation of the cell cycle.

References:

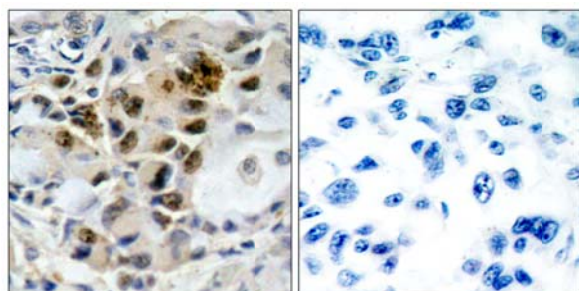
Di Maira G, et al. (2005) Cell Death Differ; 12(6): 668-77.
Essers MA, et al. EMBO J 2004 Nov. 11.
Brownawell AM, (2001) Mol Cell Biol; 21(10): 3534-46.
Kops GJ, et al. (1999) Nature; 398(6728): 630-4.

Recommended Dilutions:

Western blotting 1:500~1:1000
Immunohistochemistry 1:50~1:100



Western blot analysis of extracts from 293 and THP1 cells using AFX (Ab-197) Antibody #21162.



Immunohistochemical analysis of paraffin-embedded human lung carcinoma tissue using AFX (Ab-197) Antibody #21162 (left) or the same antibody preincubated with blocking peptide (right).

Citation:

If you publish research using #21162 please [let us know](#).

Related Pathway: Cancer/Apoptosis, Akt, Insulin/Glucose, Chromatin/Transcription

Note: For western blotting, incubate membrane with diluted antibody in 5% nonfat milk, 1X TBS, 0.1% Tween-20 at 4°C with gentle shaking, overnight.