

#21155

Akt2 (Ab-474) Antibody

Catalog: #21155-1 50µl **Orders:** order@signalwayantibody.com
#21155-2 100µl **Support:** tech@signalwayantibody.com
Storage: Store at -20°C/1 year **Web:** www.signalwayantibody.com



Application	Species Reactivity	Source	Molecular Wt.
WB IHC	Human Mouse Rat	Rabbit Polyconal Ab	60KD

Description: Antibodies were produced by immunizing rabbits with synthetic peptide and KLH conjugates. Antibodies were purified by affinity-chromatography using epitope-specific peptide.

Specificity: The antibody detects endogenous level of total Akt2 protein.

Immunogen: Peptide sequence around aa. 472~476 (Q-F-S-Y-S) derived from Human Akt2.

Formulation: Supplied at 1.0mg/mL in phosphate buffered saline (without Mg²⁺ and Ca²⁺), pH 7.4, 150mM NaCl, 0.02% sodium azide and 50% glycerol.

Synonyms: PKB beta Akt-2 Protein kinase B RAC-PK-beta

Accession No.: Swiss-Prot#: P31751 NCBI Gene#: 208
NCBI Protein#: NP_001617.1

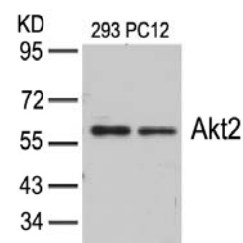
Background: General protein kinase capable of phosphorylating several known proteins.

References:

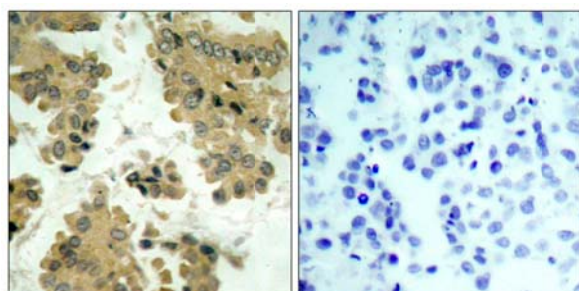
Sun M, et al. (2001) Cancer Res; 61(16): 5985-91.
Yuan ZQ, et al. (2000) Oncogene; 19(19): 2324-30.
Meier R, et al. (1997) J Biol Chem; 272(48): 30491-7.

Recommended Dilutions:

Western blotting 1:500~1:1000
Immunohistochemistry 1:50~1:100



Western blot analysis of extracts from 293 and PC12 cells using Akt2 (Ab-474) Antibody #21155.



Immunohistochemical analysis of paraffin-embedded human lung carcinoma tissue using Akt2 (Ab-474) Antibody #21155 (left) or the same antibody preincubated with blocking peptide (right).

Citation:

If you publish research using #21155 please [let us know](#).

Related Pathway: Akt, Insulin/Glucose, Jak/Stat, Cytoskeletal/Adhesion, Wnt/beta-catenin

Note: For western blotting, incubate membrane with diluted antibody in 5% nonfat milk, 1X TBS, 0.1% Tween-20 at 4°C with gentle shaking, overnight.