

#21150

p27Kip1 (Ab-10) Antibody

Catalog: #21150-1 50µl **Orders:** order@signalwayantibody.com
 #21150-2 100µl **Support:** tech@signalwayantibody.com
Storage: Store at -20°C/1 year **Web:** www.signalwayantibody.com



Application	Species Reactivity	Source	Molecular Wt.
WB IHC	Human Mouse Rat	Rabbit Polyconal Ab	27KD

Description: Antibodies were produced by immunizing rabbits with synthetic peptide and KLH conjugates. Antibodies were purified by affinity-chromatography using epitope-specific peptide.

Specificity: The antibody detects endogenous level of total p27Kip1 protein.

Immunogen: Peptide sequence around aa.8~12 (N-G-S-P-S) derived from Human p27Kip1.

Formulation: Supplied at 1.0mg/mL in phosphate buffered saline (without Mg²⁺ and Ca²⁺), pH 7.4, 150mM NaCl, 0.02% sodium azide and 50% glycerol.

Synonyms: CDKN1B CDN1B Cyclin-dependent kinase inhibitor 1B
Cyclin-dependent kinase inhibitor p27 KIP1

Accession No.: Swiss-Prot#: P46527 NCBI Gene#: 1027
NCBI Protein#: NP_004055.1

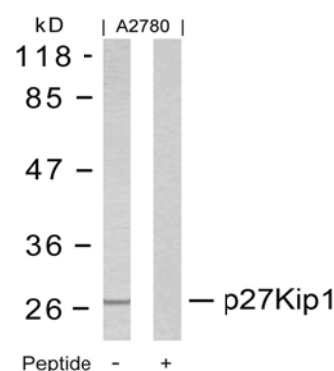
Background: Important regulator of cell cycle progression. Involved in G1 arrest. Potent inhibitor of cyclin E- and cyclin A-CDK2 complexes. Positive regulator of cyclin D-dependent kinases such as CDK4. Regulated by phosphorylation and degradation events.

References:

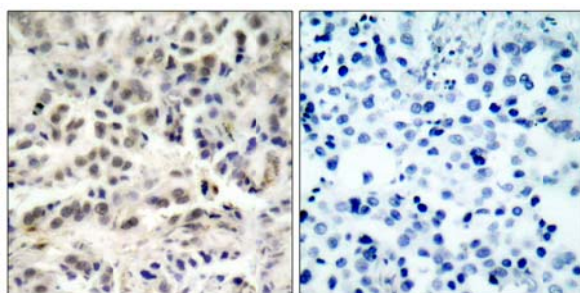
Le XF, et al. (2003)J Biol Chem.
 Connor MK, et al. (2003)Mol Biol Cell; 14(1): 201-13.
 McAllister SS, et al. (2003) Mol Cell Biol; 23(1): 216-28.
 Chopra S, et al. (2002)J Biol Chem; 277(36): 32413-6.
 Boehm M, et al. (2002)EMBO J; 21(13): 3390-401.

Recommended Dilutions:

Western blotting 1:500~1:1000
 Immunohistochemistry 1:50~1:100



Western blot analysis of extracts from A2780 cells using p27Kip1 (Ab-10) Antibody #21150 and the same antibody preincubated with blocking peptide.



Immunohistochemical analysis of paraffin-embedded human lung carcinoma tissue using p27Kip1 (Ab-10) Antibody #21150 (left) or the same antibody preincubated with blocking peptide (right).

Citation:

Fan Yang, Yu-Ping Xu, et al. Cloning and Characterization of a Novel Intracellular Protein p48.2 that Negatively Regulates Cell Cycle Progression. The International Journal of Biochemistry & Cell Biology, 41 (11), 2240–2250. (2009)

If you publish research using #21150 please [let us know](#).

Related Pathway: CellCycle, Akt

Note: For western blotting, incubate membrane with diluted antibody in 5% nonfat milk, 1X TBS, 0.1% Tween-20 at 4°C with gentle shaking, overnight.