

#21145

cdc25C (Ab-216) Antibody

Catalog: #21145-1 50µl **Orders:** order@signalwayantibody.com
#21145-2 100µl **Support:** tech@signalwayantibody.com
Storage: Store at -20°C/1 year **Web:** www.signalwayantibody.com



Application	Species Reactivity	Source	Molecular Wt.
WB IHC IF	Human	Rabbit Polyclonal Ab	60KD

Description: Antibodies were produced by immunizing rabbits with synthetic peptide and KLH conjugates. Antibodies were purified by affinity-chromatography using epitope-specific peptide.

Specificity: The antibody detects endogenous level of total cdc25C protein.

Immunogen: Peptide sequence around aa.214~218 (S-P-S-M-P) derived from Human cdc25C.

Formulation: Supplied at 1.0mg/mL in phosphate buffered saline (without Mg²⁺ and Ca²⁺), pH 7.4, 150mM NaCl, 0.02% sodium azide and 50% glycerol.

Synonyms: CDC25M1 MPIP3

Accession No.: Swiss-Prot#: P30307 NCBI Gene#: 995
NCBI Protein#: NP_001781.2

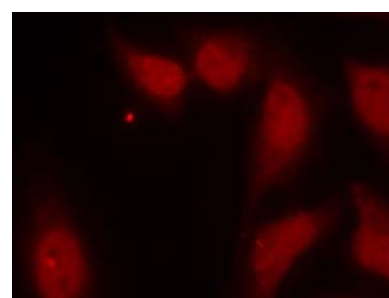
Background: cdc25C is highly conserved during evolution and it plays a key role in the regulation of cell division. The encoded protein is a tyrosine phosphatase and belongs to the Cdc25 phosphatase family. It directs dephosphorylation of cyclin B-bound CDC2 and triggers entry into mitosis. It is also thought to suppress p53-induced growth arrest. Multiple alternatively spliced transcript variants of this gene have been described, however, the full-length nature of many of them is not known.

References:

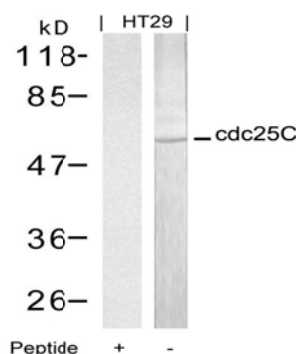
Toyoshima-Morimoto F. et al. (2002) EMBO Rep. 3(4): 341-348.
Ferguson AM. et al. (2005) Mol Cell Biol. 25(7): 2853-2860.
Donzelli M. et al. (2003) EMBO Rep. 4(7): 671-677.
Chen F. et al. (2002) Proc Natl Acad Sci U S A. 99(4): 1990-1995.

Recommended Dilutions:

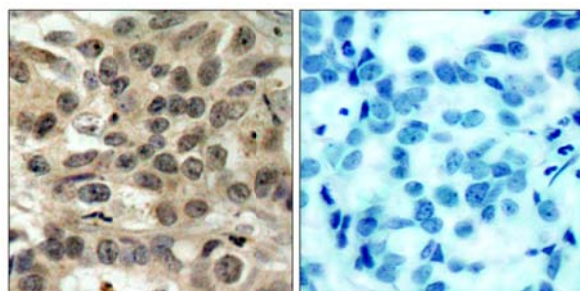
Western blotting 1:500~1:1000
Immunohistochemistry 1:50~1:100
Immunofluorescence 1:100~1:200



Immunofluorescence staining of methanol-fixed HeLa cells using cdc25C (Ab-216) Antibody #21145.



Western blot analysis of extracts from HT29 cells using cdc25C (Ab-216) Antibody #21145 and the same antibody preincubated with blocking peptide.



Immunohistochemical analysis of paraffin-embedded human breast carcinoma tissue using cdc25C (Ab-216) Antibody #21145 (left) or the same antibody preincubated with blocking peptide (right).

Citation: If you publish research using #21145 please [let us know](#).

Related Pathway: CellCycle, Kinase/Phosphatases

Note: For western blotting, incubate membrane with diluted antibody in 5% nonfat milk, 1X TBS, 0.1% Tween-20 at 4°C with gentle shaking, overnight.