

#21139

## BRCA1 (Ab-1524) Antibody

**Catalog:** #21139-1 50µl **Orders:** [order@signalwayantibody.com](mailto:order@signalwayantibody.com)  
#21139-2 100µl **Support:** [tech@signalwayantibody.com](mailto:tech@signalwayantibody.com)  
**Storage:** Store at -20°C/1 year **Web:** [www.signalwayantibody.com](http://www.signalwayantibody.com)



| Application | Species Reactivity | Source              | Molecular Wt. |
|-------------|--------------------|---------------------|---------------|
| WB IF       | Human              | Rabbit Polyconal Ab | 220KD         |

**Description:** Antibodies were produced by immunizing rabbits with synthetic peptide and KLH conjugates. Antibodies were purified by affinity-chromatography using epitope-specific peptide.

**Specificity:** The antibody detects endogenous level of total BRCA1 protein.

**Immunogen:** Peptide sequence around aa.1522~1526 (Y-P-S-Q-E) derived from Human BRCA1.

**Formulation:** Supplied at 1.0mg/mL in phosphate buffered saline (without Mg<sup>2+</sup> and Ca<sup>2+</sup>), pH 7.4, 150mM NaCl, 0.02% sodium azide and 50% glycerol.

**Synonyms:** RNF53

**Accession No.:** Swiss-Prot#:P38398 NCBI Gene#: 672  
NCBI Protein#: NP\_009225.1

**Background:** The BRCA1-BARD1 heterodimer coordinates a diverse range of cellular pathways such as DNA damage repair, ubiquitination and transcriptional regulation to maintain genomic stability. Acts by mediating ubiquitin E3 ligase activity that is required for its tumor suppressor function. Plays a central role in DNA repair by facilitating cellular response to DNA repair. Required for appropriate cell cycle arrests after ionizing irradiation in both the S-phase and the G2 phase of the cell cycle. Involved in transcriptional regulation of P21 in response to DNA damage. Required for FANCD2 targeting to sites of DNA damage. May function as a transcriptional regulator. Inhibits lipid synthesis by binding to inactive phosphorylated ACACA and preventing its dephosphorylation

### References:

Lin SY, et al. (2004) Proc Natl Acad Sci U S A, 101(17): 6484-6489  
Zhang J, et al. (2004) Mol Cell Biol; 24(2): 708-718  
Beger C, et al. (2001) Proc Natl Acad Sci U S A; 98(1): 130-135  
Gardner K, et al. (2001) Breast Cancer Res; 3(1): 11-13  
Zheng L, et al. (2001) Proc Natl Acad Sci U S A; 98(17): 9587-9592

### Citation:

If you publish research using #21139 please [let us know](#).

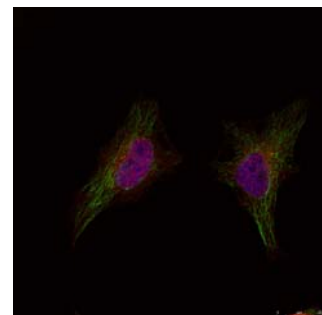
**Related Pathway:** DNA Damage/repair, CellCycle

**Note:** For western blotting, incubate membrane with diluted antibody in 5% nonfat milk, 1X TBS, 0.1% Tween-20 at 4°C with gentle shaking, overnight.

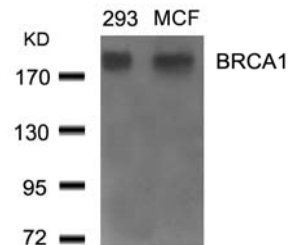
### Recommended Dilutions:

Western blotting 1:500~1:1000

Immunofluorescence 1:100~1:200



Immunofluorescence staining of methanol-fixed HeLa cells using BRCA1 (Ab-1524) Antibody #21139.



Western blot analysis of extracts from 293 and MCF cells using BRCA1 (Ab-1524) Antibody #21139.