

#21121

JAK2 (Ab-1007) Antibody

Catalog: #21121-1 50µl **Orders:** order@signalwayantibody.com
#21121-2 100µl **Support:** tech@signalwayantibody.com
Storage: Store at -20°C/1 year **Web:** www.signalwayantibody.com



Application	Species Reactivity	Source	Molecular Wt.
WB	Human Mouse Rat	Rabbit Polyconal Ab	125KD

Description: Antibodies were produced by immunizing rabbits with synthetic peptide and KLH conjugates. Antibodies were purified by affinity-chromatography using epitope-specific peptide.

Specificity: The antibody detects endogenous level of total JAK2 protein.

Immunogen: Peptide sequence around aa. 1005~1009 (K-E-Y-Y-K) derived from Human JAK2.

Formulation: Supplied at 1.0mg/mL in phosphate buffered saline (without Mg²⁺ and Ca²⁺), pH 7.4, 150mM NaCl, 0.02% sodium azide and 50% glycerol.

Synonyms: Janus kinase 2

Accession No.: Swiss-Prot#: O60674 NCBI Gene#: 3717
NCBI Protein#: NP_004963.1

Background: Plays a role in leptin signaling and control of body weight

References:

James C, et al. (2005) Nature. 434(7037): 1144-1148.
Argetsinger LS, et al. (2004) Mol Cell Biol. 24(11): 4955-4967.
Ungureanu D, et al. (2002) Mol Cell Biol. 22(10): 3316-3326.
Xie S, et al. (2001) Oncogene. 20(43): 6188-6195.

Citation:

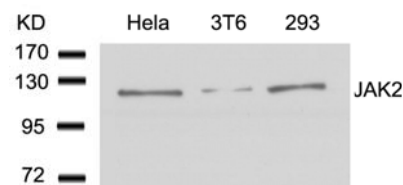
If you publish research using #21121 please [let us know](#).

Related Pathway: Jak/Stat, Cancer/Apoptosis, Akt, Kinases/Phosphatases

Note: For western blotting, incubate membrane with diluted antibody in 5% nonfat milk, 1X TBS, 0.1% Tween-20 at 4°C with gentle shaking, overnight.

Recommended Dilutions:

Western blotting 1:500~1:1000



Western blot analysis of extracts from HeLa, 3T6 and 293 cells using JAK2 (Ab-1007) Antibody #21121.