

#21111

CDK2 (Ab-160) Antibody

Catalog: #21111-1 50µl **Orders:** order@signalwayantibody.com
#21111-2 100µl **Support:** tech@signalwayantibody.com
Storage: Store at -20°C/1 year **Web:** www.signalwayantibody.com



Application	Species Reactivity	Source	Molecular Wt.
WB	Human Mouse Rat	Rabbit Polyclonal Ab	34KD

Description: Antibodies were produced by immunizing rabbits with synthetic peptide and KLH conjugates. Antibodies were purified by affinity-chromatography using epitope-specific peptide.

Specificity: The antibody detects endogenous level of total CDK2 protein.

Immunogen: Peptide sequence around aa.158~162 (T-Y-T-H-E) derived from Human CDK2.

Formulation: Supplied at 1.0mg/mL in phosphate buffered saline (without Mg²⁺ and Ca²⁺), pH 7.4, 150mM NaCl, 0.02% sodium azide and 50% glycerol.

Synonyms: kinase Cdk2 p33 protein kinase

Accession No.: Swiss-Prot#: P24941 NCBI Gene#: 1017
NCBI Protein#: NP_001789.2

Background: Involved in the control of the cell cycle. Interacts with cyclins A, B1, B3, D, or E. Activity of CDK2 is maximal during S phase and G2.

References:

Ukomadu C, et al.(2003) J Biol Chem; 278(7): 4840-6
Morris MC, et al.(2002)J Biol Chem; 277(26): 23847-53
Brown NR, et al.(1999)J Biol Chem; 274(13): 8746-56
Liu Y, et al.(2004) J Biol Chem; 279(6): 4507-14

Citation:

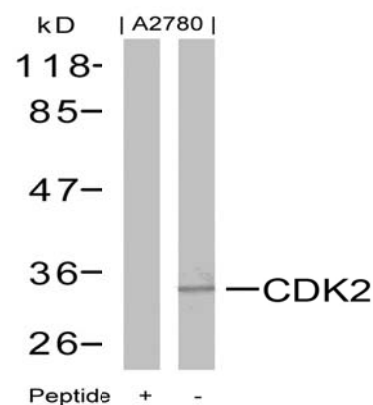
If you publish research using #21111 please [let us know](#).

Related Pathway: Cancer/Apoptosis, CellCycle, Cytoskeletal/Adhesion, Kinase/Phosphatases

Note: For western blotting, incubate membrane with diluted antibody in 5% nonfat milk, 1X TBS, 0.1% Tween-20 at 4°C with gentle shaking, overnight.

Recommended Dilutions:

Western blotting 1:500~1:1000



Western blot analysis of extracts from A2780 cells using CDK2 (Ab-160) Antibody #21111 and the same antibody preincubated with blocking peptide.