

#21086

p53 (Ab-18) Antibody

Catalog: #21086-1 50µl **Orders:** order@signalwayantibody.com
#21086-2 100µl **Support:** tech@signalwayantibody.com
Storage: Store at -20°C/1 year **Web:** www.signalwayantibody.com



Application	Species Reactivity	Source	Molecular Wt.
WB	Human	Rabbit Polyconal Ab	53KD

Description: Antibodies were produced by immunizing rabbits with synthetic peptide and KLH conjugates. Antibodies were purified by affinity-chromatography using epitope-specific peptide.

Recommended Dilutions:

Western blotting 1:500~1:1000

Specificity: The antibody detects endogenous level of total p53 protein.

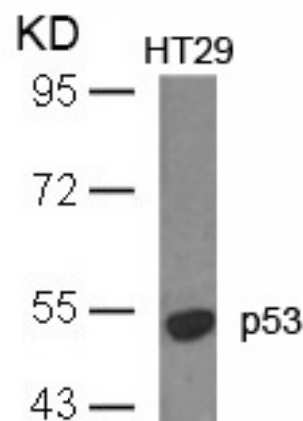
Immunogen: Peptide sequence around aa. 16~20 (Q-E-T-F-S) derived from Human p53.

Formulation: Supplied at 1.0mg/mL in phosphate buffered saline (without Mg²⁺ and Ca²⁺), pH 7.4, 150mM NaCl, 0.02% sodium azide and 50% glycerol.

Synonyms: Tumor suppressor p53 Phosphoprotein p53
Antigen NY-CO-13

Accession No.: Swiss-Prot#: P04637 NCBI Gene#: 7157
NCBI Protein#: NP_000537.3

Background: Acts as a tumor suppressor in many tumor types; induces growth arrest or apoptosis depending on the physiological circumstances and cell type. Involved in cell cycle regulation as a trans-activator that acts to negatively regulate cell division by controlling a set of genes required for this process. One of the activated genes is an inhibitor of cyclin-dependent kinases. Apoptosis induction seems to be mediated either by stimulation of BAX and FAS antigen expression, or by repression of Bcl-2 expression. Implicated in Notch signaling cross-over.



Western blot analysis of extracts from HT29 cells using p53 (Ab-18) Antibody #21086.

References:

- Lin T, et al. (2005) Nat Cell Biol; 7(2): 165-71.
- Vega FM, et al. (2004) Mol Cell Biol; 24(23): 10366-80.
- Li J, et al. (2004) J Biol Chem; 279(40): 41275-9.
- Wang J, et al. (2004) J Biol Chem; 279(38): 39584-92.

Citation:

If you publish research using #21086 please [let us know](#).

Related Pathway: Akt, Cancer/Apoptosis, CellCycle, MAPK, Chromatin/Transcription

Note: For western blotting, incubate membrane with diluted antibody in 5% nonfat milk, 1X TBS, 0.1% Tween-20 at 4°C with gentle shaking, overnight.