

#21082

Integrin $\beta 3$ (Ab-773) Antibody

Catalog: #21082-1 50 μ l **Orders:** order@signalwayantibody.com
#21082-2 100 μ l **Support:** tech@signalwayantibody.com
Storage: Store at -20°C/1 year **Web:** www.signalwayantibody.com



Application	Species Reactivity	Source	Molecular Wt.
WB IHC	Human Mouse	Rabbit Polyclonal Ab	110KD

Description: Antibodies were produced by immunizing rabbits with synthetic peptide and KLH conjugates. Antibodies were purified by affinity-chromatography using epitope-specific peptide.

Specificity: The antibody detects endogenous level of total Integrin $\beta 3$ protein.

Immunogen: Peptide sequence around aa. 771~775 (P-L-Y-K-E) derived from Human Integrin $\beta 3$.

Formulation: Supplied at 1.0mg/mL in phosphate buffered saline (without Mg²⁺ and Ca²⁺), pH 7.4, 150mM NaCl, 0.02% sodium azide and 50% glycerol.

Synonyms: Platelet membrane glycoprotein IIIa

Accession No.: Swiss-Prot#: P05106 NCBI Gene#: 3690
NCBI Protein#: NP_000203.2

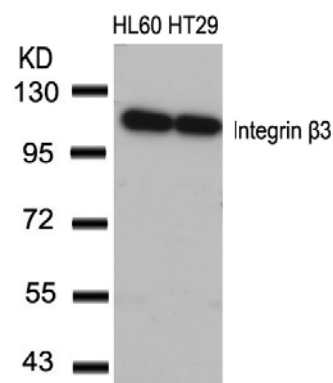
Background: Integrin α -V/ β -3 is a receptor for cytotactin, fibronectin, laminin, matrix metalloproteinase-2, osteopontin, osteomodulin, prothrombin, thrombospondin, vitronectin and von Willebrand factor. Integrin α -IIb/ β -3 is a receptor for fibronectin, fibrinogen, plasminogen, prothrombin, thrombospondin and vitronectin. Integrins α -IIb/ β -3 and α -V/ β -3 recognize the sequence R-G-D in a wide array of ligands. Integrin α -IIb/ β -3 recognizes the sequence H-H-L-G-G-G-A-K-Q-A-G-D-V in fibrinogen gamma chain. Following activation integrin α -IIb/ β -3 brings about platelet/platelet interaction through binding of soluble fibrinogen. This step leads to rapid platelet aggregation which physically plugs ruptured endothelial surface. In case of HIV-1 infection, the interaction with extracellular viral Tat protein seems to enhance angiogenesis in Kaposi's sarcoma lesions.

References:

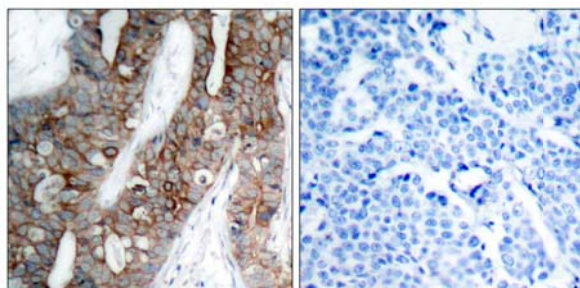
Chandhoke SK, et al. (2004) J Cell Sci; 117(Pt 8): 1431-41.
Datta A, et al. (2002) J Biol Chem; 277(6): 3943-9.
Law DA, et al. (1996) J Biol Chem; 271(18): 10811-5.

Recommended Dilutions:

Western blotting 1:500~1:1000
Immunohistochemistry 1:50~1:100



Western blot analysis of extracts from HL60 and HT29 cells using Integrin $\beta 3$ (Ab-773) Antibody #21082.



Immunohistochemical analysis of paraffin-embedded human breast carcinoma tissue using Integrin $\beta 3$ (Ab-773) Antibody #21082 (left) or the same antibody preincubated with blocking peptide (right).

Citation:

If you publish research using #21082 please [let us know](#).

Related Pathway: Cytoskeletal/Adhesion

Note: For western blotting, incubate membrane with diluted antibody in 5% nonfat milk, 1X TBS, 0.1% Tween-20 at 4°C with gentle shaking, overnight.

This product is for in vitro research use only and is not intended for use in humans or animals.