

#21058

p95/NBS1 (Ab-343) Antibody

Catalog: #21058-1 50µl **Orders:** order@signalwayantibody.com
#21058-2 100µl **Support:** tech@signalwayantibody.com
Storage: Store at -20°C/1 year **Web:** www.signalwayantibody.com



Application	Species Reactivity	Source	Molecular Wt.
WB IHC	Human	Rabbit Polyconal Ab	95KD

Description: Antibodies were produced by immunizing rabbits with synthetic peptide and KLH conjugates. Antibodies were purified by affinity-chromatography using epitope-specific peptide.

Specificity: The antibody detects endogenous level of total p95/NBS1 protein.

Immunogen: Peptide sequence around aa.341~345 (S-L-S-Q-G) derived from Human p95/NBS1.

Formulation: Supplied at 1.0mg/mL in phosphate buffered saline (without Mg²⁺ and Ca²⁺), pH 7.4, 150mM NaCl, 0.02% sodium azide and 50% glycerol.

Synonyms: NBN

Accession No.: Swiss-Prot#: O60934 NCBI Gene#: 4683
NCBI Protein#: NP_002476.2

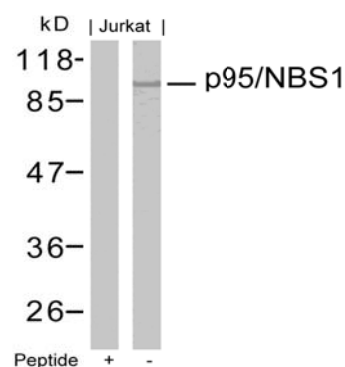
Background: Mutations in p95/NBS1 gene are associated with Nijmegen breakage syndrome, an autosomal recessive chromosomal instability syndrome characterized by microcephaly, growth retardation, immunodeficiency, and cancer predisposition. The encoded protein is a member of the MRE11/RAD50 double-strand break repair complex which consists of 5 proteins. This gene product is thought to be involved in DNA double-strand break repair and DNA damage-induced checkpoint activation.

References:

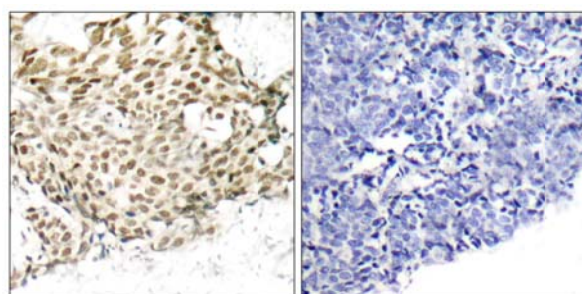
Hsu HL, et al (2005) *Oncogene*; 24(31): 4956-64.
Falck J, et al. (2005) *Nature*; 434(7033): 605-11.
Buscemi G, et al. (2004) *Oncogene*; 23(46): 7691-700.
Beausoleil SA, et al. (2004) *Proc Natl Acad Sci U S A*; 101(33): 12130-5.

Recommended Dilutions:

Western blotting 1:500~1:1000
Immunohistochemistry 1:50~1:100



Western blot analysis of extracts from Jurkat cells using p95/NBS1 (Ab-343) Antibody #21058 and the same antibody preincubated with blocking peptide.



Immunohistochemical analysis of paraffin-embedded human breast carcinoma tissue using p95/NBS1 (Ab-343) Antibody #21058 (left) or the same antibody preincubated with blocking peptide (right).

Citation:

If you publish research using #21058 please [let us know](#).

Related Pathway: DNA damage/repair, CellCycle

Note: For western blotting, incubate membrane with diluted antibody in 5% nonfat milk, 1X TBS, 0.1% Tween-20 at 4°C with gentle shaking, overnight.