

#21052

CREB (Ab-133) Antibody

Catalog: #21052-1 50µl **Orders:** order@signalwayantibody.com
#21052-2 100µl **Support:** tech@signalwayantibody.com
Storage: Store at -20°C/1 year **Web:** www.signalwayantibody.com



Application	Species Reactivity	Source	Molecular Wt.
WB IHC	Human Mouse Rat	Rabbit Polyclonal Ab	43KD

Description: Antibodies were produced by immunizing rabbits with synthetic peptide and KLH conjugates. Antibodies were purified by affinity-chromatography using epitope-specific peptide.

Specificity: The antibody detects endogenous level of total CREB protein and it also detects the CREB-related protein ATF-1.

Immunogen: Peptide sequence around aa. 131~135 (R-P-S-Y-R) derived from Human CREB.

Formulation: Supplied at 1.0mg/mL in phosphate buffered saline (without Mg²⁺ and Ca²⁺), pH 7.4, 150mM NaCl, 0.02% sodium azide and 50% glycerol.

Synonyms: CREB-1 CREB1

Accession No.: Swiss-Prot#: P16220 NCBI Gene#: 1385
NCBI Protein#: NP_004370.1

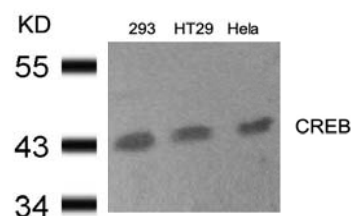
Background: This protein binds the cAMP response element (CRE), a sequence present in many viral and cellular promoters. CREB stimulates transcription on binding to the CRE. Transcription activation is enhanced by the TORC coactivators which act independently of Ser-133 phosphorylation. Implicated in synchronization of circadian rhythmicity.

References:

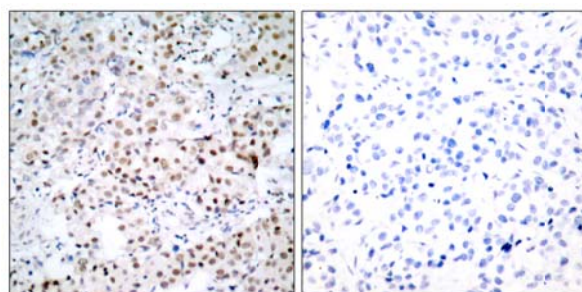
- Xing J, et al. (1998) Mol Cell Biol 18(4): 1946-55.
Tan Y, et al. (1996) EMBO J; 15(17): 4629-42.
Hao, M. et al. (1996) J. Biol. Chem. 271, 29380-29385.
Mayo LD, et al. (2001) Biol Chem; 276(27): 25184-9.
Lu, H. et al. (1997) Mol. Cell. Biol. 17, 5923-5934.

Recommended Dilutions:

Western blotting 1:500~1:1000
Immunohistochemistry 1:50~1:100



Western blot analysis of extracts from 293, HT29 and HeLa cells using CREB (Ab-133) Antibody #21052.



Immunohistochemical analysis of paraffin-embedded human breast carcinoma tissue using CREB (Ab-133) Antibody #21052 (left) or the same antibody preincubated with blocking peptide (right).

Citation:

If you publish research using #21052 please [let us know](#).

Related Pathway: MAPK, Cancer/Apoptosis, Chromatin/Transcription, Neuroscience

Note: For western blotting, incubate membrane with diluted antibody in 5% nonfat milk, 1X TBS, 0.1% Tween-20 at 4°C with gentle shaking, overnight.