

#21049

STAT5A (Ab-780) Antibody

Catalog: #21049-1 50µl **Orders:** order@signalwayantibody.com
#21049-2 100µl **Support:** tech@signalwayantibody.com
Storage: Store at -20°C/1 year **Web:** www.signalwayantibody.com



Application	Species Reactivity	Source	Molecular Wt.
WB IHC	Human Mouse Rat	Rabbit Polyconal Ab	90KD

Description: Antibodies were produced by immunizing rabbits with synthetic peptide and KLH conjugates. Antibodies were purified by affinity-chromatography using epitope-specific peptide.

Specificity: The antibody detects endogenous level of total STAT5A protein.

Immunogen: Peptide sequence around aa. 778~782 (R-L-S-P-P) derived from Human STAT5A.

Formulation: Supplied at 1.0mg/mL in phosphate buffered saline (without Mg²⁺ and Ca²⁺), pH 7.4, 150mM NaCl, 0.02% sodium azide and 50% glycerol.

Synonyms:

Accession No.: Swiss-Prot#: P42229 NCBI Gene#: 6776
NCBI Protein#: NP_003143.2

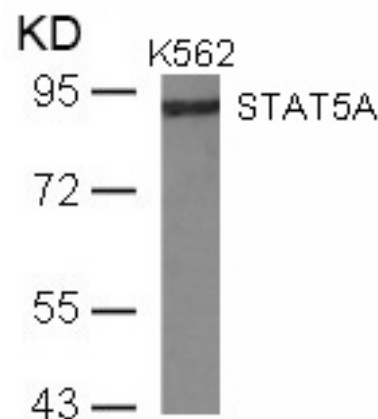
Background: Carries out a dual function: signal transduction and activation of transcription. Binds to the GAS element and activates PRL-induced transcription.

References:

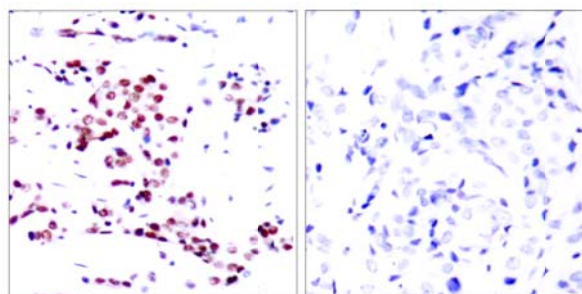
Gouilleux F, et al. (1994) EMBO J. 13: 4361-4369.
Dentelli P, et al. (1999) J Immunol. 163: 2151-2159.
Meinke A, et al. (1996) Mol Cell Biol. 16: 6937-6944.

Recommended Dilutions:

Western blotting 1:500~1:1000
Immunohistochemistry 1:50~1:100



Western blot analysis of extracts from K562 cells using STAT5A (Ab-780) Antibody #21049.



Immunohistochemical analysis of paraffin-embedded human breast carcinoma tissue using STAT5A (Ab-780) Antibody #21049 (left) or the same antibody preincubated with blocking peptide (right).

Citation:

If you publish research using #21049 please [let us know](#).

Related Pathway: Jak/Stat, Chromatin/Transcription

Note: For western blotting, incubate membrane with diluted antibody in 5% nonfat milk, 1X TBS, 0.1% Tween-20 at 4°C with gentle shaking, overnight.