

#21022

## c-Jun (Ab-93) Antibody

**Catalog:** #21022-1 50µl **Orders:** [order@signalwayantibody.com](mailto:order@signalwayantibody.com)  
#21022-2 100µl **Support:** [tech@signalwayantibody.com](mailto:tech@signalwayantibody.com)  
**Storage:** Store at -20°C/1 year **Web:** [www.signalwayantibody.com](http://www.signalwayantibody.com)



Application	Species Reactivity	Source	Molecular Wt.
WB IHC	Human Mouse Rat	Rabbit Polyclonal Ab	43KD

**Description:** Antibodies were produced by immunizing rabbits with synthetic peptide and KLH conjugates. Antibodies were purified by affinity-chromatography using epitope-specific peptide.

**Specificity:** The antibody detects endogenous level of total c-Jun protein.

**Immunogen:** Peptide sequence around aa. 91~95 (T-P-T-P-T) derived from Human c-Jun.

**Formulation:** Supplied at 1.0mg/mL in phosphate buffered saline (without Mg<sup>2+</sup> and Ca<sup>2+</sup>), pH 7.4, 150mM NaCl, 0.02% sodium azide and 50% glycerol.

**Synonyms:** AH119 AP1 Jun A c-Jun p39

**Accession No.:** Swiss-Prot#: P05412 NCBI Gene#: 3725  
NCBI Protein#: NP\_002219.1

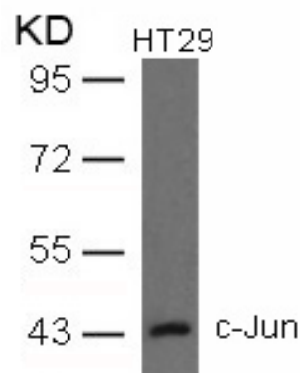
**Background:** Transcription factor that recognizes and binds to the enhancer heptamer motif 5'-TGA[CG]TCA-3'.

### References:

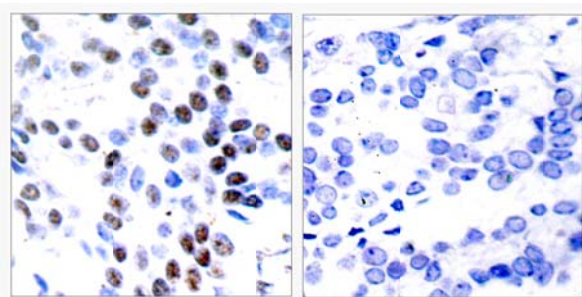
Binetruy B, et al. (1991) Nature. 351: 122-127.  
Smeal T, et al. (1991) Nature. 354:494-496.  
Derijard B, et al. (1994) Cell. 76:1025-1037.  
Kyriakis J M, et al. (1994) Nature. 369: 156-160.

### Recommended Dilutions:

Western blotting 1:500~1:1000  
Immunohistochemistry 1:50~1:100



Western blot analysis of extracts from HT29 cells using c-Jun (Ab-93) Antibody #21022.



Immunohistochemical analysis of paraffin-embedded human breast carcinoma tissue using c-Jun (Ab-93) Antibody #21022 (left) or the same antibody preincubated with blocking peptide (right).

### Citation:

If you publish research using #21022 please [let us know](#).

**Related Pathway:** MAPK, Chromatin/Transcription

**Note:** For western blotting, incubate membrane with diluted antibody in 5% nonfat milk, 1X TBS, 0.1% Tween-20 at 4°C with gentle shaking, overnight.