

#11553

Cdc25B (Phospho-Ser149) Antibody

Catalog: #11553-1 50µl **Orders:** order@signalwayantibody.com
#11553-2 100µl **Support:** tech@signalwayantibody.com
Storage: Store at -20°C/1 year **Web:** www.signalwayantibody.com



Application	Species Reactivity	Source	Molecular Wt.
WB	Mouse Rat	Rabbit Polyconal Ab	62KD

Description: Antibodies were produced by immunizing rabbits with synthetic peptide and KLH conjugates. Antibodies were purified by affinity-chromatography using epitope-specific peptide.

Specificity: The antibody detects endogenous level of Cdc25B protein only when phosphorylated at serine 149.

Immunogen: Peptide sequence around phosphorylation site of Serine 149 (F-R-S(p)-L-P) derived from Mouse Cdc25B.

Formulation: Supplied at 1.0mg/mL in phosphate buffered saline (without Mg²⁺ and Ca²⁺), pH 7.4, 150mM NaCl, 0.02% sodium azide and 50% glycerol.

Synonyms: CDC25B

Accession No.: Swiss-Prot#: Q9DBN8 NCBI Gene#: 12531
NCBI Protein#: NP_001104545.1

Background: Cdc25B is a member of the CDC25 family of phosphatases. CDC25B activates the cyclin dependent kinase CDC2 by removing two phosphate groups and it is required for entry into mitosis. CDC25B shuttles between the nucleus and the cytoplasm due to nuclear localization and nuclear export signals. The protein is nuclear in the M and G1 phases of the cell cycle and moves to the cytoplasm during S and G2. CDC25B has oncogenic properties, although its role in tumor formation has not been determined. Multiple transcript variants for this gene exist.

References:

Li G, et al. (2010) *Retrovirology*.7:59.
Wang Z, et al. (2010) *BMC Cancer*.10:233.
Lucci MA, et al. (2010) *Cell Oncol*.32(5-6):361-72.

Citation:

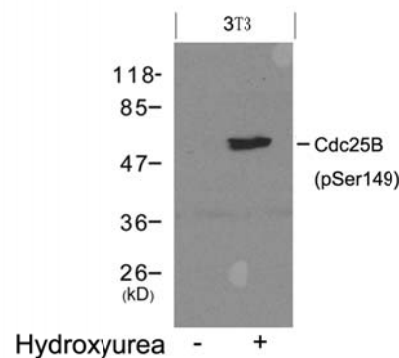
If you publish research using #11553 please [let us know](#).

Related Pathway:

Note: For western blotting, incubate membrane with diluted antibody in 5% nonfat milk, 1X TBS, 0.1% Tween-20 at 4°C with gentle shaking, overnight.

Recommended Dilutions:

Western blotting 1:500~1:1000



Western blot analysis of extracts from 3T3 cells untreated (lane 1) or treated with Hydroxyurea (lane 2) using Cdc25B (Phospho-Ser149) Antibody #11553.