

#11551

## EGFR (phospho-Tyr1197) Goat Polyclonal Antibody



**Catalog:** #11551-1 50µl **Orders:** [order@signalwayantibody.com](mailto:order@signalwayantibody.com)  
#11551-2 100µl **Support:** [tech@signalwayantibody.com](mailto:tech@signalwayantibody.com)  
**Storage:** Store at -20°C/1 year **Web:** [www.signalwayantibody.com](http://www.signalwayantibody.com)

Application	Species Reactivity	Source	Molecular Wt.
WB	Human Mouse Rat	Goat Polyclonal Ab	175KD

**Description:** Antibodies were produced by immunizing goat with synthetic phosphopeptide and KLH conjugates. Antibodies were purified by affinity-chromatography using epitope-specific phosphopeptide. Non-phospho specific antibodies were removed by chromatography using non-phosphopeptide.

**Specificity:** The antibody detects endogenous level of total EGFR protein.

**Immunogen:** Peptide sequence around phosphorylation site of tyrosine 1197 (A-E-Y(p)-L-R) derived from Human EGFR.

**Formulation:** Supplied at 1.0mg/mL in phosphate buffered saline (without Mg<sup>2+</sup> and Ca<sup>2+</sup>), pH 7.4, 150mM NaCl, 0.02% sodium azide and 50% glycerol.

**Synonyms:** Receptor tyrosine-protein kinase ErbB-1 ERBB1 kinase EGFR

**Accession No.:** Swiss-Prot#: P00533 NCBI Gene#: 1956  
NCBI Protein#: NP\_005219.2

**Background:** Receptor for EGF, but also for other members of the EGF family, as TGF-alpha, amphiregulin, betacellulin, heparin-binding EGF-like growth factor, GP30 and vaccinia virus growth factor. Is involved in the control of cell growth and differentiation

### References:

Corbalan-Garcia S, et al. (1996) Mol Cell Biol; 16(10): 5674-5682  
Kanner SB, et al. (1991) Mol Cell Biol; 11(2): 713-720  
Wu TT, et al. (1998) Mol Biol Cell; 9(7): 1661-1674  
O'Rourke DM, et al. (1997) Proc Natl Acad Sci U S A; 94(7): 3250-3255  
Goldstein DJ, et al. (1994) J Virol; 68(7): 4432-4441

### Citation:

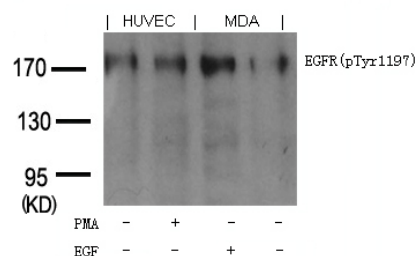
If you publish research using #11551 please [let us know](#).

**Related Pathway:** Receptors, Kinase/Phosphatases

**Note:** For western blotting, incubate membrane with diluted antibody in 5% nonfat milk, 1X TBS, 0.1% Tween-20 at 4°C with gentle shaking, overnight.

### Recommended Dilutions:

Western blotting 1:500~1:1000



Western blot analysis of extracts from PMA-treated HUVEC cells or EGF-treated MDA cells using EGFR (phospho-Tyr1197) goat polyclonal antibody #11551.