

#11549

c-Cbl (phospho-Tyr700) Antibody

Catalog: #11549-1 50µl **Orders:** order@signalwayantibody.com
#11549-2 100µl **Support:** tech@signalwayantibody.com
Storage: Store at -20°C/1 year **Web:** www.signalwayantibody.com



Application	Species Reactivity	Source	Molecular Wt.
WB IHC IF	Human	Rabbit Polyclonal Ab	120KD

Description: Antibodies were produced by immunizing rabbits with synthetic phosphopeptide and KLH conjugates. Antibodies were purified by affinity-chromatography using epitope-specific phosphopeptide. Non-phospho specific antibodies were removed by chromatography using non-phosphopeptide.

Specificity: The antibody detects endogenous level of c-Cbl only when phosphorylated at tyrosine 770.

Immunogen: Peptide sequence around phosphorylation site of tyrosine 770 (T-E-Y(p)-M-T) derived from Human c-Cbl.

Formulation: Supplied at 1.0mg/mL in phosphate buffered saline (without Mg²⁺ and Ca²⁺), pH 7.4, 150mM NaCl, 0.02% sodium azide and 50% glycerol.

Synonyms: Signal transduction protein CBL Proto-oncogene c-CBL
Casitas B-lineage lymphoma proto-oncogene
RING finger protein 55

Accession No.: Swiss-Prot#: P22681 NCBI Gene#: 867
NCBI Protein#: NP_005179.2

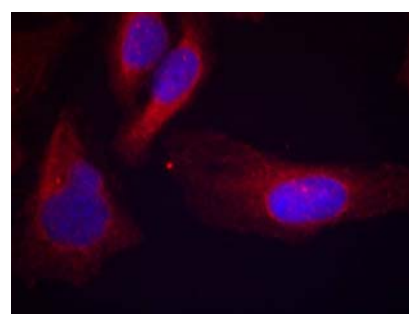
Background: Participates in signal transduction in hematopoietic cells. Adapter protein that functions as a negative regulator of many signaling pathways that start from receptors at the cell surface. Acts as an E3 ubiquitin-protein ligase, which accepts ubiquitin from specific E2 ubiquitin-conjugating enzymes, and then transfers it to substrates promoting their degradation by the proteasome. Recognizes activated receptor tyrosine kinases, including PDGFA, EGF and CSF1, and terminates signaling.

References:

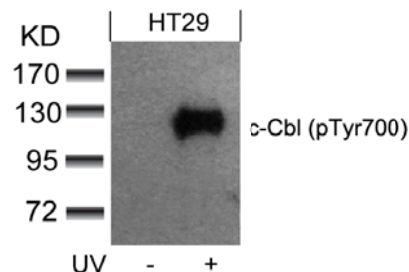
Blake, T.J. et al. (1991) *Oncogene* 6, 653-657.
Thien, C.B. and Langdon, W.Y. (1998) *Immunol. Cell Biol.* 76, 473-482.
Kamei, T. et al. (2000) *Int. J. Oncol.* 17, 335-339.
Hunter, C. et al. (1999) *J. Biol. Chem.* 274, 2097-2106.

Recommended Dilutions:

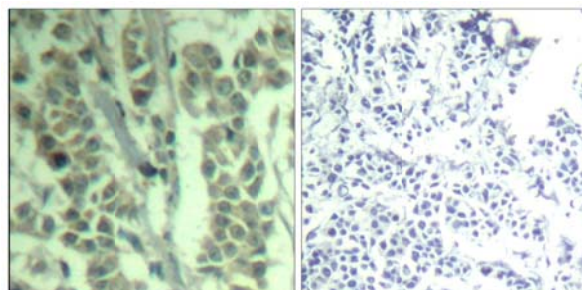
Western blotting 1:500~1:1000
Immunohistochemistry 1:50~1:100
Immunofluorescence 1:100~1:200



Immunofluorescence staining of methanol-fixed HeLa cells using c-Cbl (phospho-Tyr700) Antibody #11549.



Western blot analysis of extracts from HT29 cells untreated or treated with UV using c-Cbl (phospho-Tyr700) Antibody #11549.



Immunohistochemical analysis of paraffin-embedded human breast carcinoma tissue using c-Cbl (Phospho-Tyr700) Antibody #11549 (left) or the same antibody preincubated with blocking peptide (right).

Citation:

If you publish research using #11549 please [let us know](#).

Related Pathway: Cancer/Apoptosis

Note: For western blotting, incubate membrane with diluted antibody in 5% nonfat milk, 1X TBS, 0.1% Tween-20 at 4°C with gentle shaking, overnight.

This product is for in vitro research use only and is not intended for use in humans or animals.