

#11543

## CDK6 (phospho-Tyr24) Antibody

**Catalog:** #11543-1 50µl **Orders:** [order@signalwayantibody.com](mailto:order@signalwayantibody.com)  
#11543-2 100µl **Support:** [tech@signalwayantibody.com](mailto:tech@signalwayantibody.com)  
**Storage:** Store at -20°C/1 year **Web:** [www.signalwayantibody.com](http://www.signalwayantibody.com)



Application	Species Reactivity	Source	Molecular Wt.
WB IHC IF	Human Mouse	Rabbit Polyclonal Ab	36KD

**Description:** Antibodies were produced by immunizing rabbits with synthetic phosphopeptide and KLH conjugates. Antibodies were purified by affinity-chromatography using epitope-specific phosphopeptide. Non-phospho specific antibodies were removed by chromatography using non-phosphopeptide.

**Specificity:** The antibody detects endogenous level of CDK6 only when phosphorylated at tyrosine 24.

**Immunogen:** Peptide sequence around phosphorylation site of tyrosine 24 (G-A-Y(p)-G-K) derived from Human CDK6.

**Formulation:** Supplied at 1.0mg/mL in phosphate buffered saline (without Mg<sup>2+</sup> and Ca<sup>2+</sup>), pH 7.4, 150mM NaCl, 0.02% sodium azide and 50% glycerol.

**Synonyms:** Serine/threonine-protein kinase PLSTIRE

**Accession No.:** Swiss-Prot#: Q00534 NCBI Gene#: 1021  
NCBI Protein#: NP\_001138778.1

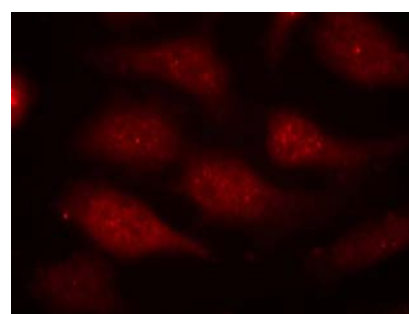
**Background:** Probably involved in the control of the cell cycle. Interacts with D-type G1 cyclins.

### References:

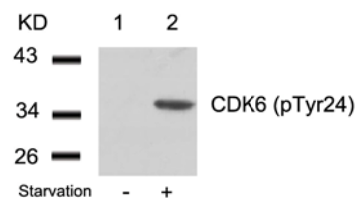
Flores-Rozas, H. et al. (1994) Proc. Natl. Acad. Sci. USA 91, 8655-8659.  
Pestell, R.G. et al. (1999) Endocr. Rev. 20, 501-534.  
Lukas, J. et al. (1996) Mol. Cell. Biol. 16, 6917-1625.

### Recommended Dilutions:

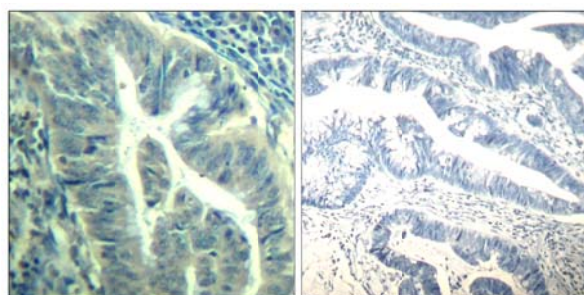
Western blotting 1:500~1:1000  
Immunohistochemistry 1:50~1:100  
Immunofluorescence 1:100~1:200



Immunofluorescence staining of methanol-fixed HeLa cells using CDK6 (phospho-Tyr24) Antibody #11543.



Western blot analysis of extracts from 293 cells untreated (lane 1) or treated with starvation (lane 2) using CDK6 (phospho-Tyr24) Antibody #11543.



Immunohistochemical analysis of paraffin-embedded human colon carcinoma tissue using CDK6 (Phospho-Tyr24) Antibody #11543 (left) or the same antibody preincubated with blocking peptide (right).

### Citation:

If you publish research using #11543 please [let us know](#).

**Related Pathway:** Cancer/Apoptosis, CellCycle, Kinase/Phosphatases

**Note:** For western blotting, incubate membrane with diluted antibody in 5% nonfat milk, 1X TBS, 0.1% Tween-20 at 4°C with gentle shaking, overnight.