

#11540

Cyclin B1 (phospho-Ser147) Antibody

Catalog: #11540-1 50µl **Orders:** order@signalwayantibody.com
#11540-2 100µl **Support:** tech@signalwayantibody.com
Storage: Store at -20°C/1 year **Web:** www.signalwayantibody.com



Application	Species Reactivity	Source	Molecular Wt.
WB IHC IF	Human	Rabbit Polyclonal Ab	60KD

Description: Antibodies were produced by immunizing rabbits with synthetic phosphopeptide and KLH conjugates. Antibodies were purified by affinity-chromatography using epitope-specific phosphopeptide. Non-phospho specific antibodies were removed by chromatography using non-phosphopeptide.

Specificity: The antibody detects endogenous level of Cyclin B1 only when phosphorylated at serine 147.

Immunogen: Peptide sequence around phosphorylation site of Serine 147 (A-F-S(p)-D-V) derived from Human Cyclin B1.

Formulation: Supplied at 1.0mg/mL in phosphate buffered saline (without Mg²⁺ and Ca²⁺), pH 7.4, 150mM NaCl, 0.02% sodium azide and 50% glycerol.

Synonyms:

Accession No.: Swiss-Prot#: P14635 NCBI Gene#: 891
NCBI Protein#: NP_114172.1

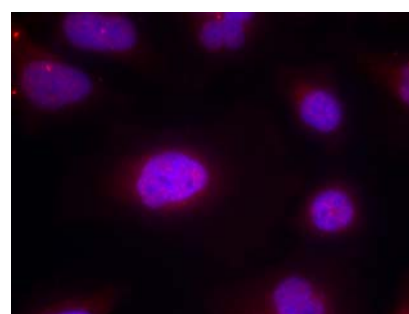
Background: The protein encoded by Cyclin B1 is a regulatory protein involved in mitosis. The gene product complexes with p34(cdc2) to form the maturation-promoting factor (MPF). Two alternative transcripts have been found, a constitutively expressed transcript and a cell cycle-regulated transcript, that is expressed predominantly during G2/M phase. The different transcripts result from the use of alternate transcription initiation sites.

References:

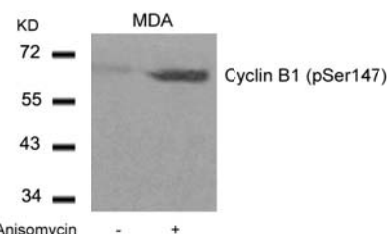
Norbury, C. and Nurse, P. (1992) Annu. Rev. Biochem. 61, 441-470.
Atherton-Fessler, S. et al. (1993) Mol. Cell. Biol. 13, 1675-1685.
Galaktionov, K. et al. (1995) Genes Dev. 9, 1046-1058.

Recommended Dilutions:

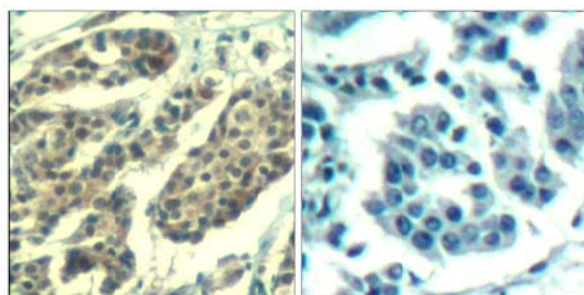
Western blotting 1:500~1:1000
Immunohistochemistry 1:50~1:100
Immunofluorescence 1:100~1:200



Immunofluorescence staining of methanol-fixed HeLa cells using Cyclin B1 (phospho-Ser147) Antibody #11540.



Western blot analysis of extracts from MDA cells untreated or treated with Anisomycin using Cyclin B1 (phospho-Ser147) Antibody #11540.



Immunohistochemical analysis of paraffin-embedded human breast carcinoma tissue using Cyclin B1 (Phospho-Ser147) Antibody #11540 (left) or the same antibody preincubated with blocking peptide (right).

Citation:

If you publish research using #11540 please [let us know](#).

Related Pathway: CellCycle

Note: For western blotting, incubate membrane with diluted antibody in 5% nonfat milk, 1X TBS, 0.1% Tween-20 at 4°C with gentle shaking, overnight.